

## LBH RABBIT PAB

货号: S219452

产品全名: LBH 兔多抗

基因符号

**UNIPROT ID:** Q53QV2 (Gene Accession - BC126434 )

背景: Transcriptional activator which may act in mitogen-activated protein kinase signaling pathway.

抗原: Fusion protein of human LBH

经过测试的应用: ELISA, IHC

推荐稀释比: IHC: 200-400; ELISA: 5000-10000

种属反应性: Rabbit

克隆性: Rabbit Polyclonal

亚型: Immunogen-specific rabbit IgG

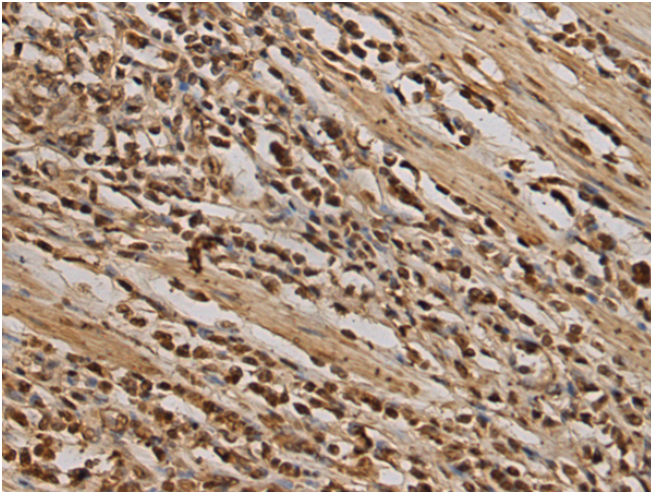
纯化: Antigen affinity purification

种属反应性: Human, Mouse

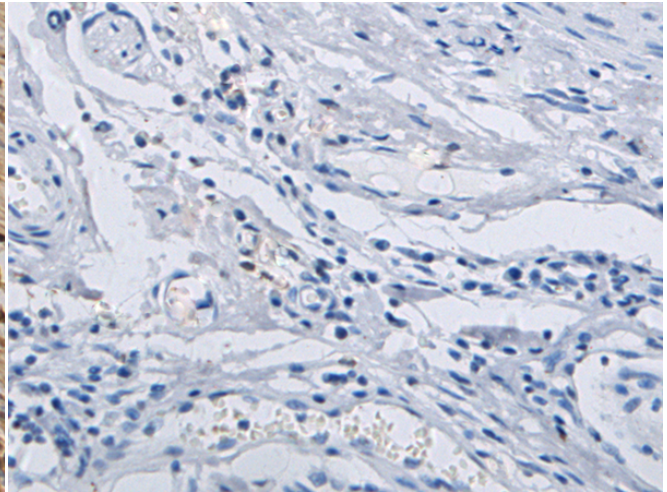
成分: PBS (without Mg<sup>2+</sup> and Ca<sup>2+</sup>), pH 7.4, 150 mM NaCl, 0.05% Sodium Azide and 40% glycerol

研究领域: Epigenetics and Nuclear Signaling

储存和运输: Store at -20°C. Avoid repeated freezing and thawing



Immunohistochemistry analysis of paraffin embedded Human gastric cancer tissue using 219452(LBH Antibody) at a dilution of 1/180(Nucleus and Cytoplasm).



In comparison with the IHC on the left, the same paraffin-embedded Human gastric cancer tissue is first treated with the fusion protein and then with 219452(Anti-LBH Antibody) at dilution 1/180.