

LBH RABBIT PAB

货号: S218953

产品全名: LBH 兔多抗

基因符号

UNIPROT ID: Q53QV2 (Gene Accession - BC126434)

背景: Transcriptional activator which may act in mitogen-activated protein kinase signaling pathway.

抗原: Fusion protein of human LBH

经过测试的应用: ELISA, WB, IHC

推荐稀释比: IHC: 50-200;WB: 500-2000;ELISA: 5000-10000

种属反应性: Rabbit

克隆性: Rabbit Polyclonal

亚型: Immunogen-specific rabbit IgG

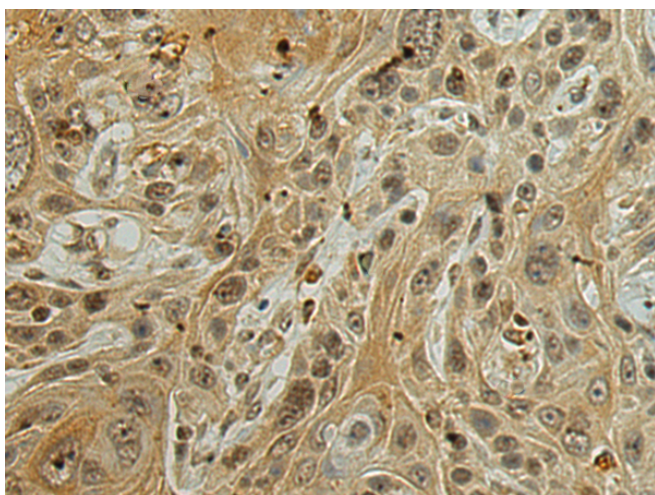
纯化: Antigen affinity purification

种属反应性: Human, Mouse, Rat

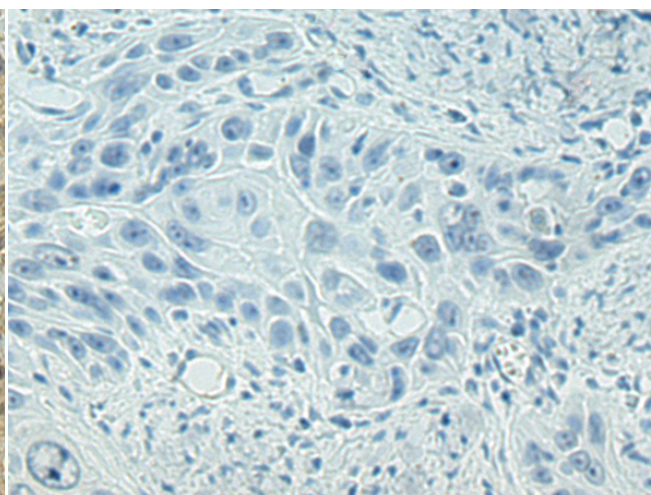
成分: PBS (without Mg²⁺ and Ca²⁺), pH 7.4, 150 mM NaCl, 0.05% Sodium Azide and 40% glycerol

研究领域: Epigenetics and Nuclear Signaling

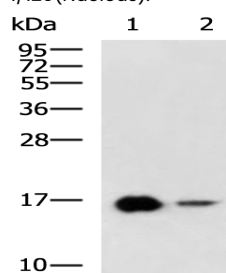
储存和运输: Store at -20°C. Avoid repeated freezing and thawing



Immunohistochemistry analysis of paraffin embedded Human esophagus cancer tissue using 218953(LBH Antibody) at a dilution of 1/120(Nucleus).



In comparison with the IHC on the left, the same paraffin-embedded Human esophagus cancer tissue is first treated with the fusion protein and then with 218953(Anti-LBH Antibody) at dilution 1/120.



Gel: 12%SDS-PAGE, Lysate: 40 µg;

Lane 1-2: Rat heart tissue, Mouse skeletal muscle tissue lysates;

Primary antibody: 218953(LBH Antibody) at dilution 1/800;

Secondary antibody: HRP-conjugated Goat anti rabbit IgG at 1/5000 dilution;

Exposure time: 5 minutes