

LATS1 RABBIT PAB

货号: N225241

产品全名: LATS1 兔多抗

基因符号 Serine/threonine-protein kinase LATS1 (EC 2.7.11.1; Large tumor suppressor homolog 1; WARTS protein kinase; h-warts)

UNIPROT ID: O95835

背景: Negative regulator of YAP1 in the Hippo signaling pathway that plays a pivotal role in organ size control and tumor suppression by restricting proliferation and promoting apoptosis.

抗原: Synthesized peptide derived from human LATS1/2

经过测试的应用: WB,ELISA

推荐稀释比: WB: 1/500-1/1000 ELISA: 1/10000

种属反应性: Rabbit

克隆性: Rabbit Polyclonal

分子量: Calculated MW: 127 kDa; Observed MW: 120 kDa

亚型: IgG

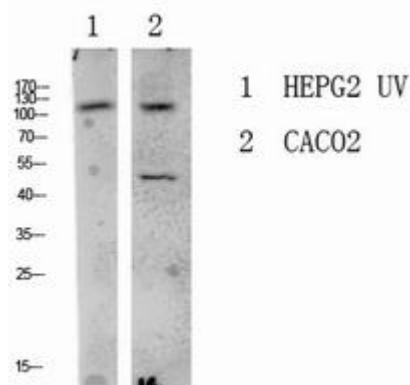
纯化: Affinity Purified

种属反应性: Human, Mouse and Rat

成分: PBS (without Mg²⁺ and Ca²⁺), pH 7.3 containing 50% glycerol, 0.5% BSA and 0.02% sodium azide

研究领域: Tags & Cell Markers

储存和运输: Store at -20°C. Avoid repeated freezing and thawing



Western blot analysis of LATS1 in various lysates using LATS1 antibody.