

LAMP2A RABBIT MAB

货号: N262461

产品全名: LAMP2A 兔单克隆抗体

基因符号 LAMP2; Lysosome-associated membrane glycoprotein 2; LAMP-2; Lysosome-associated membrane protein 2; CD107 antigen-like family member B; CD107b

UNIPROT ID: P13473

背景: Lysosomal-associated membrane protein 2 (LAMP2, 基因符号 LAMPB, CD107b) is a member of a family of membrane glycoproteins. This glycoprotein provides selectins with carbohydrate ligands. LAMP2 may plays a role in tumor cell metastasis. It may also functions in the protection, maintenance, and adhesion of the lysosome. Prior to posttranslational modification, Lysosome Associated Membrane Protein 2 (LAMP2) is a ~45 kDa polypeptide.

抗原: A synthetic peptide of human LAMP2A

经过测试的应用: WB, IHC-P, IP

推荐稀释比: WB: 1/500-1/1000 IHC: 1/50-1/100 IP: 1/20

种属反应性: Rabbit

克隆性: Rabbit Monoclonal

克隆编号: R03-2J8

分子量: Calculated MW: 45 kDa; Observed MW: 110 kDa

亚型: IgG

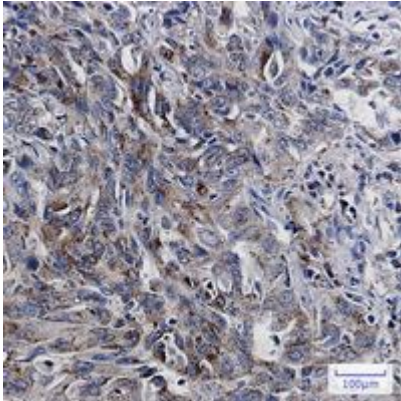
纯化: Affinity Purified

种属反应性: Human, Mouse

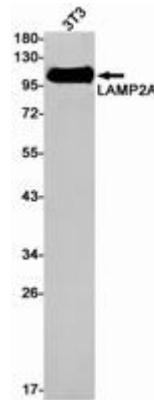
成分: PBS (without Mg²⁺ and Ca²⁺), pH 7.3 containing 50% glycerol, 0.5% BSA and 0.02% sodium azide

研究领域: Tags & Cell Markers

储存和运输: Store at -20°C. Avoid repeated freezing and thawing



Immunohistochemistry analysis of paraffin-embedded Human lung cancer using LAMP2 antibody. High-pressure and temperature Sodium Citrate pH 6.0 was used for antigen retrieval.



Western blot analysis of LAMP2 in 3T3 lysates using LAMP2A antibody.