

## LAMININ GAMMA 1 RABBIT MAB

货号: N262459

产品全名: Laminin gamma 1 兔单克隆抗体

基因符号 LAMC1; LAMB2; Laminin subunit gamma-1; Laminin B2 chain; Laminin-1 subunit gamma; Laminin-10 subunit gamma; Laminin-11 subunit gamma; Laminin-2 subunit gamma; Laminin-3 subunit gamma; Laminin-4 subunit gamma; Laminin-6 subunit gamma; Lamini

**UNIPROT ID:** P11047

背景: Binding to cells via a high affinity receptor, laminin is thought to mediate the attachment, migration and organization of cells into tissues during embryonic development by interacting with other extracellular matrix components.

抗原: Recombinant protein of human Laminin gamma 1

经过测试的应用: WB,IHC-P,IP

推荐稀释比: WB: 1/500-1/1000 IHC: 1/50-1/100 IP: 1/20

种属反应性: Rabbit

克隆性: Rabbit Monoclonal

克隆编号: R05-3C5

分子量: Calculated MW: 178 kDa; Observed MW: 220-250 kDa

亚型: IgG

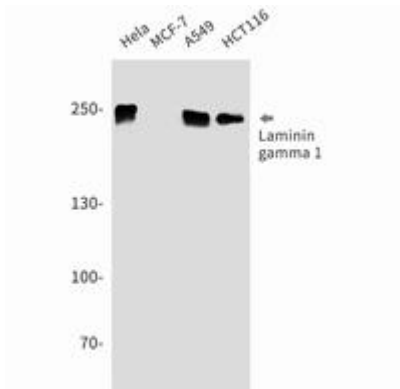
纯化: Affinity Purified

种属反应性: Human, Mouse and Rat

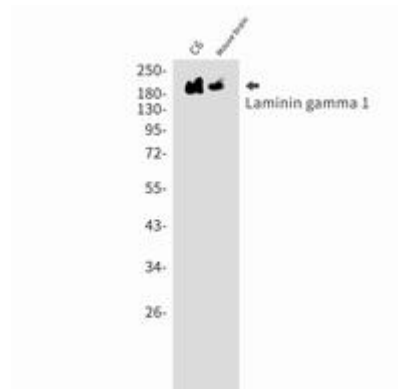
成分: PBS (without Mg<sup>2+</sup> and Ca<sup>2+</sup>), pH 7.3 containing 50% glycerol, 0.5% BSA and 0.02% sodium azide

研究领域: Cell Biology

储存和运输: Store at -20°C. Avoid repeated freezing and thawing



Western blot analysis of Laminin gamma 1 in HeLa, MCF-7, A549, HCT116 lysates using Laminin gamma 1 antibody.



Western blot analysis of Laminin gamma 1 in C6, mouse brain lysates using Laminin gamma 1 antibody.