

LAMIN B RECEPTOR RABBIT PAB

货号: N225658

产品全名: Lamin B Receptor 兔多抗

基因符号 PHA; LMN2R; TDRD18; DHCR14B; LBR

UNIPROT ID: Q14739

背景: The protein encoded by this gene belongs to the ERG4/ERG24 family. It localized in the nuclear envelope inner membrane and anchors the lamina and the heterochromatin to the membrane. It may mediate interaction between chromatin and lamin B. Mutations of this gene has been associated with autosomal recessive HEM/Greenberg skeletal dysplasia. Alternative splicing occurs at this locus and two transcript variants encoding the same protein have been identified.

抗原: A synthesized peptide derived from human Lamin B Receptor

经过测试的应用: WB,IHC-P,ICC/IF,IP

推荐稀释比: WB: 1/500-1/1000 IHC: 1/50-1/100 IF: 1/50-1/200 IP: 1/20

种属反应性: Rabbit

克隆性: Rabbit Polyclonal

分子量: Calculated MW: 71 kDa; Observed MW: 71 kDa

亚型: IgG

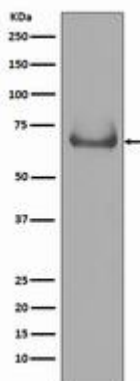
纯化: Affinity Chromatography

种属反应性: Human,Rat

成分: PBS (without Mg²⁺ and Ca²⁺), pH 7.3 containing 50% glycerol, 0.5% BSA and 0.02% sodium azide

研究领域: Tags & Cell Markers

储存和运输: Store at -20°C. Avoid repeated freezing and thawing



Western blot analysis of Lamin B Receptor in Jurkat lysates using Lamin B Receptor antibody.



Product Description

Pioneering GTPase and Oncogene Product Development since 2010
