

## LAMIN A/C RABBIT MAB

货号: N262455

产品全名: Lamin A/C 兔单克隆抗体

基因符号 LMNA; LMNI; Prelamin-A/C

**UNIPROT ID:** P02545

**背景:** Lamins are components of the nuclear lamina, a fibrous layer on the nucleoplasmic side of the inner nuclear membrane, which is thought to provide a framework for the nuclear envelope and may also interact with chromatin. Lamin A and C are present in equal amounts in the lamina of mammals. Play an important role in nuclear assembly, chromatin organization, nuclear membrane and telomere dynamics. Prelamin-A/C can accelerate smooth muscle cell senescence. It acts to disrupt mitosis and induce DNA damage in vascular smooth muscle cells (VSMCs), leading to mitotic failure, genomic instability, and premature senescence.

**抗原:** A synthetic peptide of human Lamin A/C

**经过测试的应用:** WB, IHC-F, IHC-P, ICC/IF, IP

**推荐稀释比:** WB: 1/500-1/1000 IHC: 1/50-1/100 IF: 1/50-1/200 IP: 1/20

**种属反应性:** Rabbit

**克隆性:** Rabbit Monoclonal

**克隆编号:** R06-7H5

**分子量:** Calculated MW: 74 kDa; Observed MW: 74,63 kDa

**亚型:** IgG

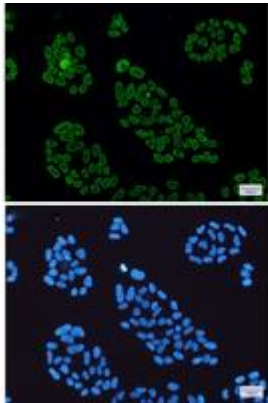
**纯化:** Affinity Purified

**种属反应性:** Human, Mouse and Rat

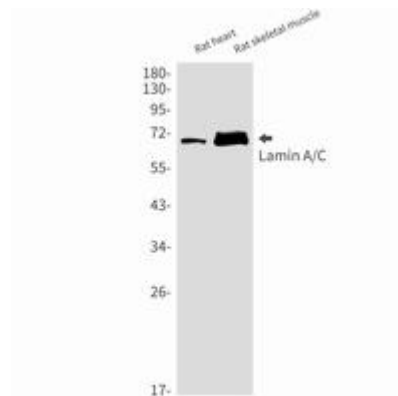
**成分:** PBS (without Mg<sup>2+</sup> and Ca<sup>2+</sup>), pH 7.3 containing 50% glycerol, 0.5% BSA and 0.02% sodium azide

**研究领域:** apoptosis - Caspase family

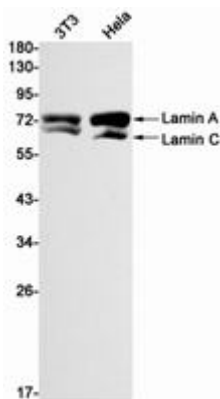
**储存和运输:** Store at -20°C. Avoid repeated freezing and thawing



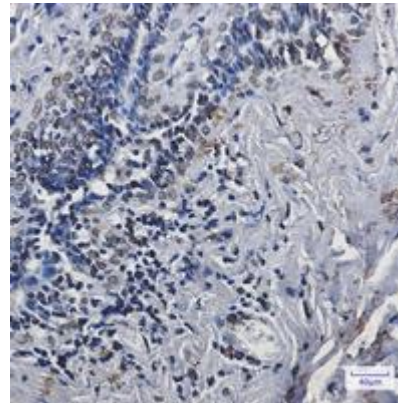
Immunocytochemistry analysis of Lamin A/C (green) in Hela using Lamin A/C antibody, and DAPI (blue)



Western blot analysis of Lamin A/C in rat heart, rat skeletal muscle lysates using Lamin A/C antibody.



Western blot analysis of Lamin A/C in 3T3, Hela lysates using Lamin A/C antibody.



Immunohistochemistry analysis of paraffin-embedded Human breast cancer using Lamin A/C antibody. High-pressure and temperature Sodium Citrate pH 6.0 was used for antigen retrieval.