

LAMIN A/C RABBIT MAB

货号: N263400

产品全名: Lamin A/C 兔单克隆抗体

基因符号 LMNA; LMNI; Prelamin-A/C

UNIPROT ID: P02545

背景: Lamins are components of the nuclear lamina, a fibrous layer on the nucleoplasmic side of the inner nuclear membrane, which is thought to provide a framework for the nuclear envelope and may also interact with chromatin. Lamin A and C are present in equal amounts in the lamina of mammals. Play an important role in nuclear assembly, chromatin organization, nuclear membrane and telomere dynamics. Prelamin-A/C can accelerate smooth muscle cell senescence. It acts to disrupt mitosis and induce DNA damage in vascular smooth muscle cells (VSMCs), leading to mitotic failure, genomic instability, and premature senescence.

抗原: A synthetic peptide of human Lamin A/C

经过测试的应用: WB, IHC-F, IHC-P, ICC/IF

推荐稀释比: WB: 1/500-1/1000 IHC: 1/50-1/100 IF: 1/50-1/200

种属反应性: Rabbit

克隆性: Rabbit Monoclonal

克隆编号: R07-115

分子量: Calculated MW: 74 kDa; Observed MW: 74,63 kDa

亚型: IgG

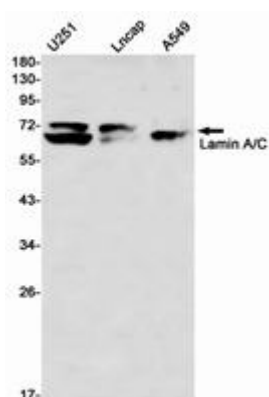
纯化: Affinity Purified

种属反应性: Human, Mouse

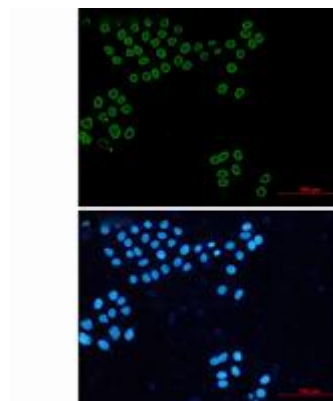
成分: PBS (without Mg²⁺ and Ca²⁺), pH 7.3 containing 50% glycerol, 0.5% BSA and 0.02% sodium azide

研究领域: Tags & Cell Markers

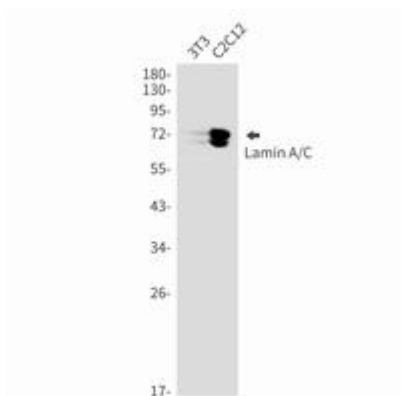
储存和运输: Store at -20°C. Avoid repeated freezing and thawing



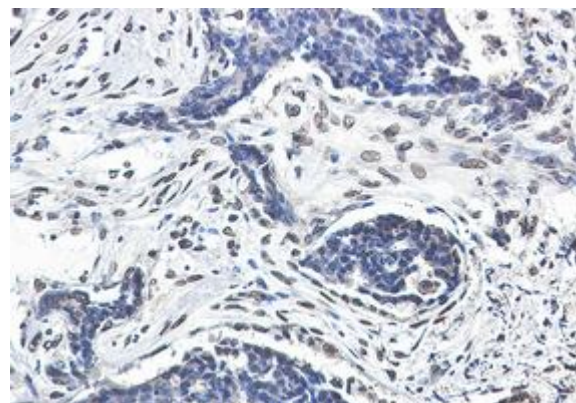
Western blot analysis of Lamin A/C in U251, Lncap, A549 lysates using Lamin A/C antibody



Immunocytochemistry analysis of Lamin A/C (green) in Hela using Lamin A/C antibody, and DAPI (blue).



Western blot analysis of Lamin A/C in 3T3, C2C12 lysates using Lamin A/C antibody.



Immunohistochemistry analysis of paraffin-embedded Human breast cancer using Lamin A/C antibody. High-pressure and temperature Sodium Citrate pH 6.0 was used for antigen retrieval.