

LAMA1 RABBIT PAB

货号: S219891

产品全名: LAMA1 兔多抗

基因符号 LAMA, S-LAM-alpha

UNIPROT ID: P25391 (Gene Accession - NP_005550)

背景: Laminin subunit alpha-1 is a protein that in humans is encoded by the LAMA1 gene. Laminin is a complex glycoprotein, consisting of three different polypeptide chains (alpha, beta, gamma), which are bound to each other by disulfide bonds into a cross-shaped molecule comprising one long and three short arms with globules at each end. Alpha-1 is a subunit of laminin-1 (laminin-111 or EHS laminin) and laminin-3 (laminin-121 or S-laminin). Binding to cells via a high affinity receptor, laminin is thought to mediate the attachment, migration and organization of cells into tissues during embryonic development by interacting with other extracellular matrix components.

抗原: Synthetic peptide of human LAMA1

经过测试的应用: ELISA, IHC

推荐稀释比: IHC: 50-200; ELISA: 1000-5000

种属反应性: Rabbit

克隆性: Rabbit Polyclonal

亚型: Immunogen-specific rabbit IgG

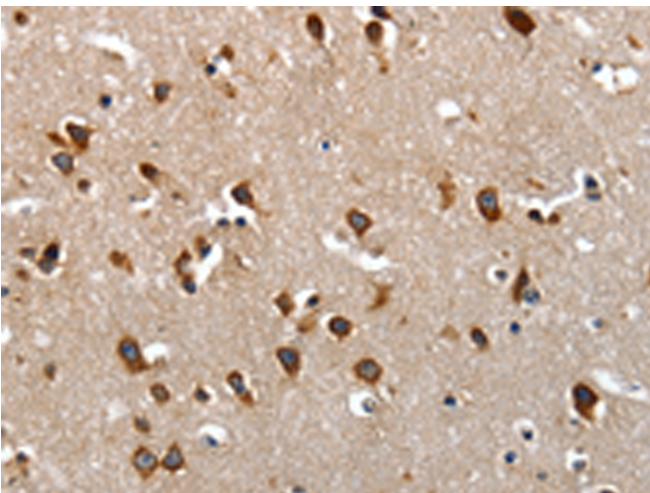
纯化: Antigen affinity purification

种属反应性: Human

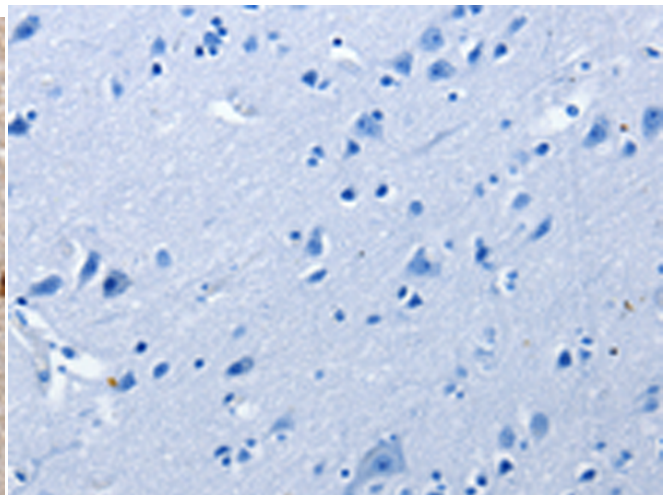
成分: PBS (without Mg²⁺ and Ca²⁺), pH 7.4, 150 mM NaCl, 0.05% Sodium Azide and 40% glycerol

研究领域: Signal Transduction, Neuroscience, Cardiovascular

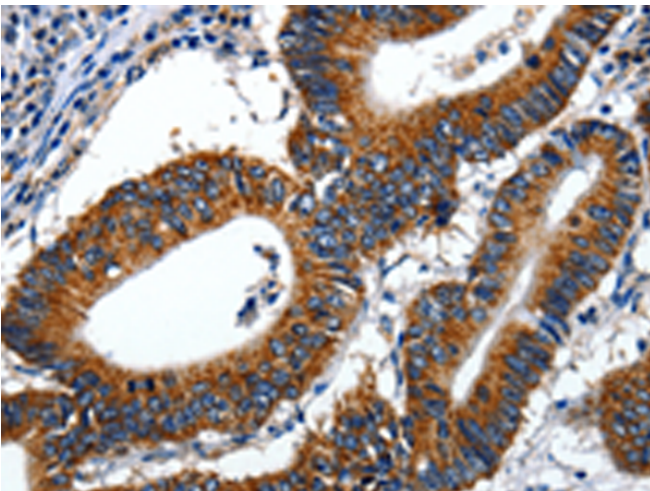
储存和运输: Store at -20°C. Avoid repeated freezing and thawing



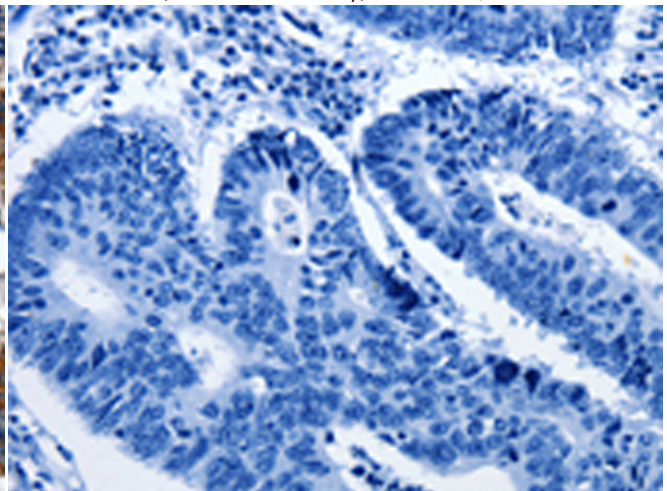
Immunohistochemistry analysis of paraffin embedded Human brain tissue using 219891(LAMA1 Antibody) at a dilution of 1/70(Cytoplasm).



In comparison with the IHC on the left, the same paraffin-embedded Human brain tissue is first treated with the synthetic peptide and then with 219891(Anti-LAMA1 Antibody) at dilution 1/70.



The image on the left is immunohistochemistry of paraffin-embedded Human colon cancer tissue using 219891(Anti-LAMA1 Antibody) at a dilution of 1/70.



In comparison with the IHC on the left, the same paraffin-embedded Human colon cancer tissue is first treated with synthetic peptide and then with D260558(Anti-LAMA1 Antibody) at dilution 1/70.



Product Description

Pioneering GTPase and Oncogene Product Development since 2010
