

L3MBTL1 RABBIT PAB

货号: S219580

产品全名: L3MBTL1 兔多抗

基因符号 L3MBTL; ZC2HC3; H-L(3)MBT; dJ138B7.3

UNIPROT ID: Q9Y468 (Gene Accession - BC039820)

背景: This gene represents a polycomb group gene. The encoded protein functions to regulate gene activity, likely via chromatin modification. The encoded protein may also be necessary for mitosis. Alternatively spliced transcript variants encoding different isoforms have been identified.

抗原: Fusion protein of human L3MBTL1

经过测试的应用: ELISA, IHC

推荐稀释比: IHC: 50-200; ELISA: 5000-10000

种属反应性: Rabbit

克隆性: Rabbit Polyclonal

亚型: Immunogen-specific rabbit IgG

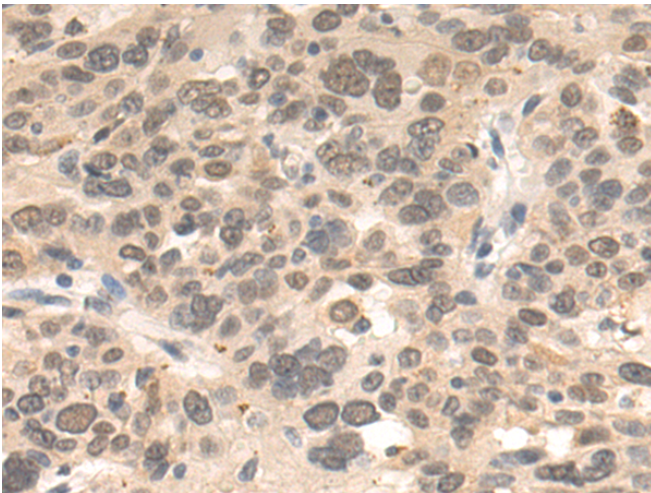
纯化: Antigen affinity purification

种属反应性: Human

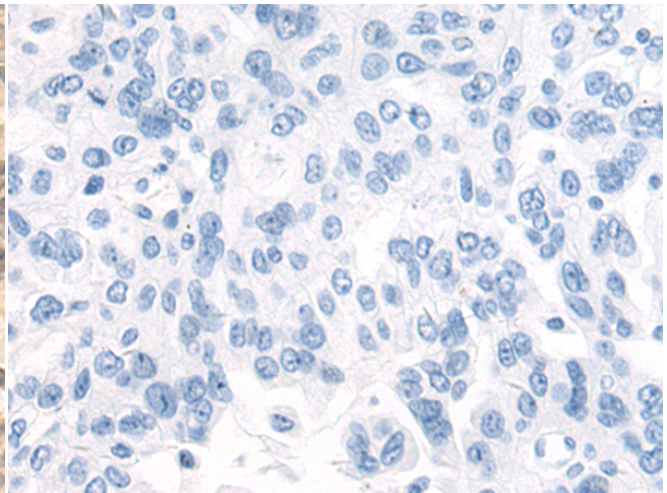
成分: PBS (without Mg²⁺ and Ca²⁺), pH 7.4, 150 mM NaCl, 0.05% Sodium Azide and 40% glycerol

研究领域: Epigenetics and Nuclear Signaling

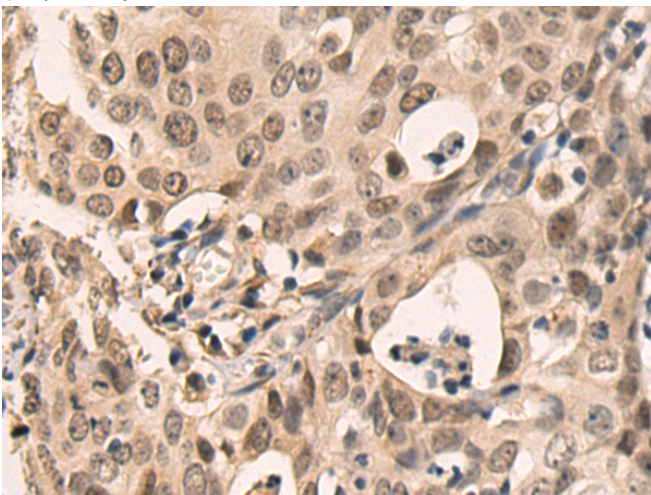
储存和运输: Store at -20°C. Avoid repeated freezing and thawing



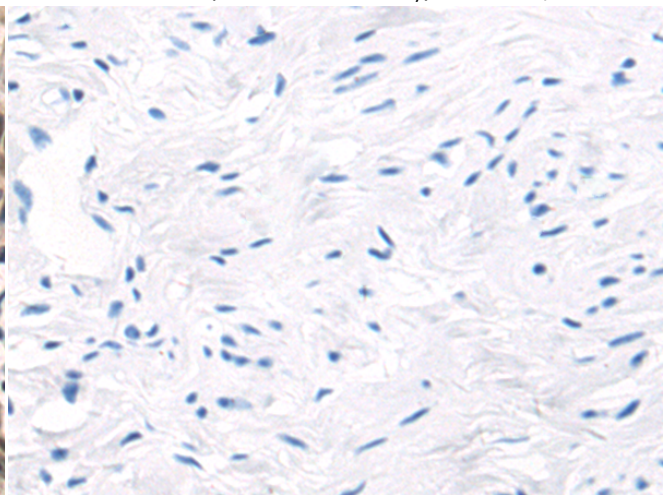
Immunohistochemistry analysis of paraffin embedded Human breast cancer tissue using 219580(L3MBTL1 Antibody) at a dilution of 1/75(Nucleus).



In comparison with the IHC on the left, the same paraffin-embedded Human breast cancer tissue is first treated with the fusion protein and then with 219580(Anti-L3MBTL1 Antibody) at dilution 1/75.



The image on the left is immunohistochemistry of paraffin-embedded Human cervical cancer tissue using 219580(Anti-L3MBTL1 Antibody) at a dilution of 1/75.



In comparison with the IHC on the left, the same paraffin-embedded Human cervical cancer tissue is first treated with fusion protein and then with D227833(Anti-L3MBTL1 Antibody) at dilution 1/75.



Product Description

Pioneering GTPase and Oncogene Product Development since 2010
