

KSR1 RABBIT PAB

货号: S220665

产品全名: KSR1 兔多抗

基因符号: KSR; RSU2

UNIPROT ID: Q8IVT5 (Gene Accession - NP_055053)

背景: Several serine/threonine protein kinases have been implicated as intermediates in signal transduction pathways. These include ERK/MAP kinases, ribosomal S6 kinase (Rsk) and Raf-1. Raf-1 has intrinsic kinase activity towards serine/threonine residues and is widely expressed in many tissue types and cell lines. Raf-1 activation is dependent on the small molecular weight GTPase Ras, but the means by which this activation occurs is poorly understood. Two proteins putatively involved in this process are Ksr-1 and Tak1. Ksr-1 (kinase suppressor of Ras) is a novel Raf-related protein kinase whose function is required for Ras signal transduction. Whether Ksr-1 lies directly downstream of Ras or acts in a parallel pathway is not yet known. Tak1 (TGF α -activated kinase) has been shown to participate in the activation of the MAP kinase family in response to TGF α stimulation.

抗原: Synthetic peptide of human KSR1

经过测试的应用: ELISA, IHC

推荐稀释比: IHC: 50-200; ELISA: 2000-5000

种属反应性: Rabbit

克隆性: Rabbit Polyclonal

亚型: Immunogen-specific rabbit IgG

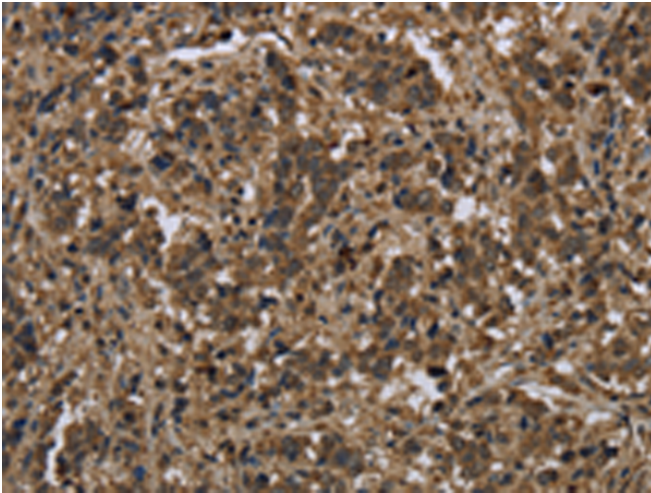
纯化: Antigen affinity purification

种属反应性: Human, Mouse

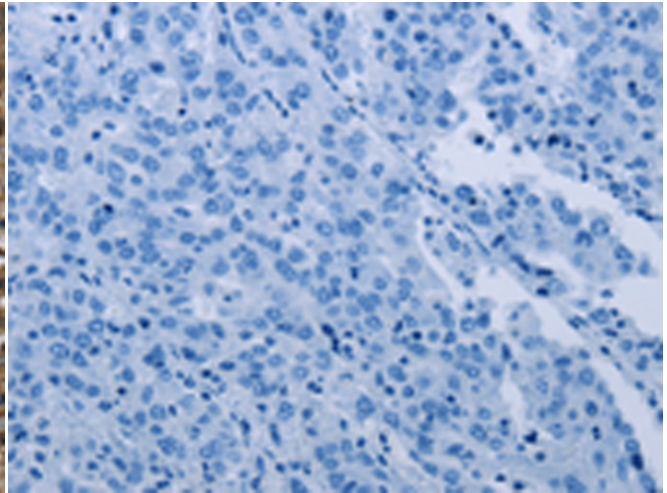
成分: PBS (without Mg $^{2+}$ and Ca $^{2+}$), pH 7.4, 150 mM NaCl, 0.05% Sodium Azide and 40% glycerol

研究领域: Signal Transduction

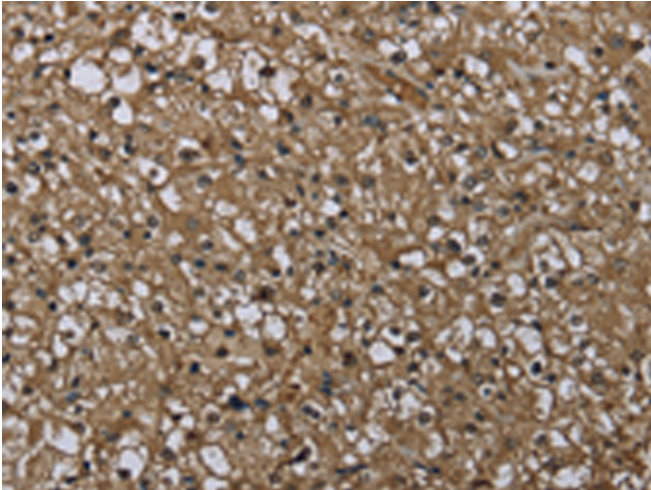
储存和运输: Store at -20°C. Avoid repeated freezing and thawing



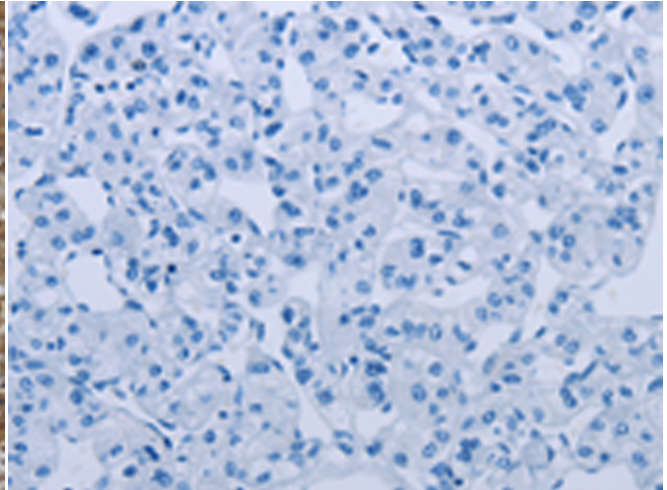
Immunohistochemistry analysis of paraffin embedded Human liver cancer tissue using 220665(KSR1 Antibody) at a dilution of 1/25(Cytoplasm).



In comparison with the IHC on the left, the same paraffin-embedded Human liver cancer tissue is first treated with the synthetic peptide and then with 220665(Anti-KSR1 Antibody) at dilution 1/25.



The image on the left is immunohistochemistry of paraffin-embedded Human prostate cancer tissue using 220665(Anti-KSR1 Antibody) at a dilution of 1/25.



In comparison with the IHC on the left, the same paraffin-embedded Human prostate cancer tissue is first treated with synthetic peptide and then with D261844(Anti-KSR1 Antibody) at dilution 1/25.