

KRTAP11-1 RABBIT PAB

货号: S221322

产品全名: KRTAP11-1 兔多抗

基因符号: HACL1; HACL-1; KAP11.1

UNIPROT ID: Q8IUUC1 (Gene Accession - NP_787054)

背景: In the hair cortex, hair keratin intermediate filaments are embedded in an interfilamentous matrix consisting of hair keratin-associated proteins (KRTAP), which are essential for the formation of a rigid and resistant hair shaft through their extensive disulfide bond cross-linking with abundant cysteine residues of hair keratins. The matrix proteins include the high-sulfur and high-glycine-tyrosine keratins.

抗原: Synthetic peptide of human KRTAP11-1

经过测试的应用: ELISA, IHC

推荐稀释比: IHC: 20-100; ELISA: 5000-10000

种属反应性: Rabbit

克隆性: Rabbit Polyclonal

亚型: Immunogen-specific rabbit IgG

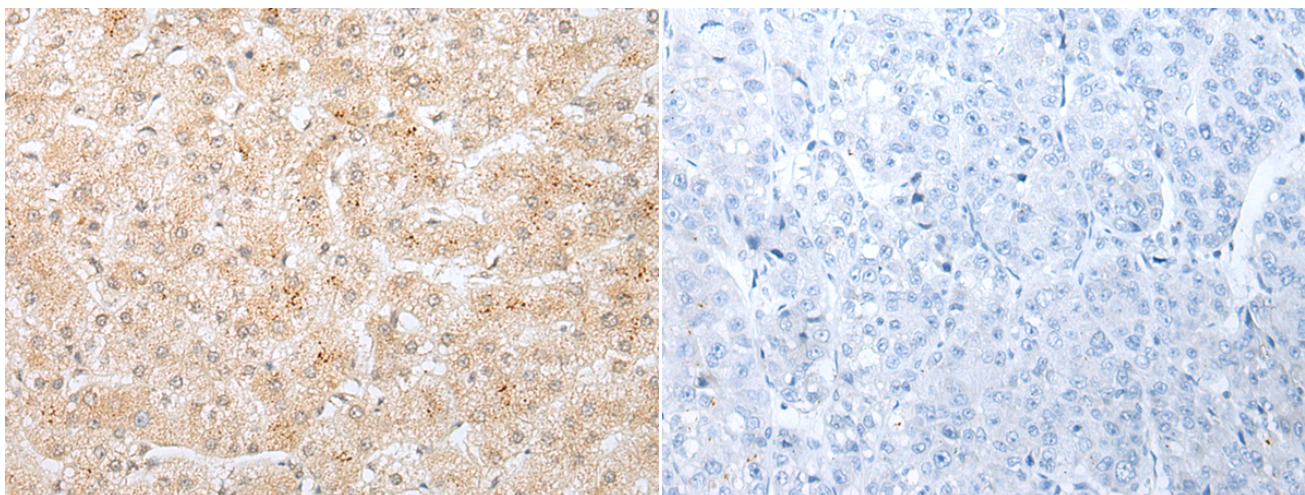
纯化: Antigen affinity purification

种属反应性: Human

成分: PBS (without Mg²⁺ and Ca²⁺), pH 7.4, 150 mM NaCl, 0.05% Sodium Azide and 40% glycerol

研究领域: Signal Transduction

储存和运输: Store at -20°C. Avoid repeated freezing and thawing



Immunohistochemistry analysis of paraffin embedded Human liver cancer tissue using 221322(KRTAP11-1 Antibody) at a dilution of 1/20(Cytoplasm).

In comparison with the IHC on the left, the same paraffin-embedded Human liver cancer tissue is first treated with the synthetic peptide and then with 221322(Anti-KRTAP11-1 Antibody) at dilution 1/20.