

## KRTAP1-1 RABBIT PAB

货号: S222335

产品全名: KRTAP1-1 兔多抗

基因符号: HB2A; KAP1.1; KAP1.6; KAP1.7; KAP1.1A; KAP1.1B; KRTAP1A; hKAP1.7; KRTAP1.1

**UNIPROT ID:** Q07627 (Gene Accession - NP\_112229)

**背景:** This protein is a member of the keratin-associated protein (KAP) family. The KAP proteins form a matrix of keratin intermediate filaments which contribute to the structure of hair fibers. KAP family members appear to have unique, family-specific amino- and carboxyl-terminal regions and are subdivided into three multi-gene families according to amino acid composition: the high sulfur, the ultrahigh sulfur, and the high tyrosine/glycine KAPs. This protein is a member of the high sulfur KAP family and the gene is localized to a cluster of KAPs at 17q12-q21.

**抗原:** Synthetic peptide of human KRTAP1-1

**经过测试的应用:** ELISA, IHC

**推荐稀释比:** IHC: 25-50; ELISA: 500-1000

**种属反应性:** Rabbit

**克隆性:** Rabbit Polyclonal

**亚型:** Immunogen-specific rabbit IgG

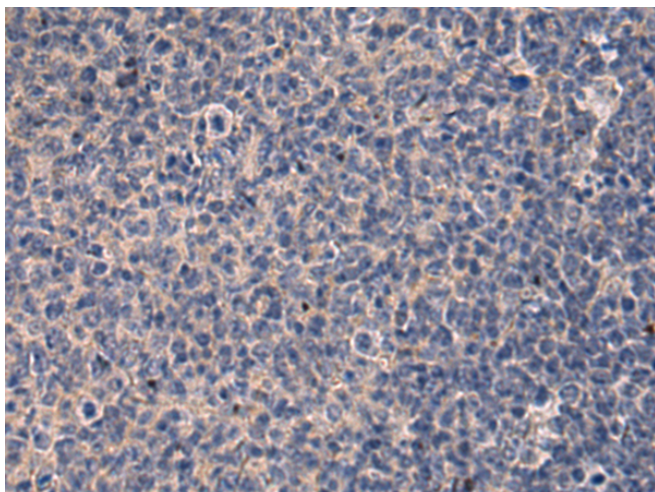
**纯化:** Antigen affinity purification

**种属反应性:** Human

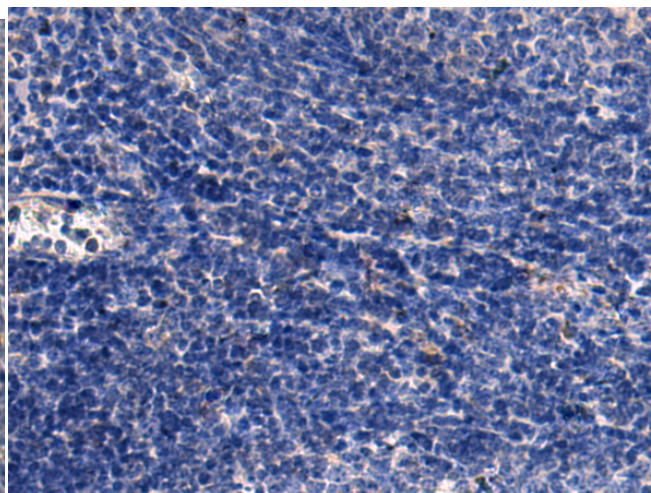
**成分:** PBS (without Mg<sup>2+</sup> and Ca<sup>2+</sup>), pH 7.4, 150 mM NaCl, 0.05% Sodium Azide and 40% glycerol

**研究领域:** Signal Transduction

**储存和运输:** Store at -20°C. Avoid repeated freezing and thawing



Immunohistochemistry analysis of paraffin embedded Human tonsil using 222335(KRTAP1-1 Antibody) at a dilution of 1/20(Cytoplasm).



In comparison with the IHC on the left, the same paraffin-embedded Human tonsil is first treated with the synthetic peptide and then with 222335(Anti-KRTAP1-1 Antibody) at dilution 1/20.