

## KRT8 RABBIT PAB

货号: S216336

产品全名: KRT8 兔多抗

基因符号: K8; KO; CK8; CK-8; CYK8; K2C8; CARD2

**UNIPROT ID:** P05787 (Gene Accession - BC008200)

**背景:** This gene is a member of the type II keratin family clustered on the long arm of chromosome 12. Type I and type II keratins heteropolymerize to form intermediate-sized filaments in the cytoplasm of epithelial cells. The product of this gene typically dimerizes with keratin 18 to form an intermediate filament in simple single-layered epithelial cells. This protein plays a role in maintaining cellular structural integrity and also functions in signal transduction and cellular differentiation. Mutations in this gene cause cryptogenic cirrhosis. Alternatively spliced transcript variants have been found for this gene.

**抗原:** Fusion protein of human KRT8

**经过测试的应用:** ELISA, IHC

**推荐稀释比:** IHC: 50-200; ELISA: 2000-5000

**种属反应性:** Rabbit

**克隆性:** Rabbit Polyclonal

**亚型:** Immunogen-specific rabbit IgG

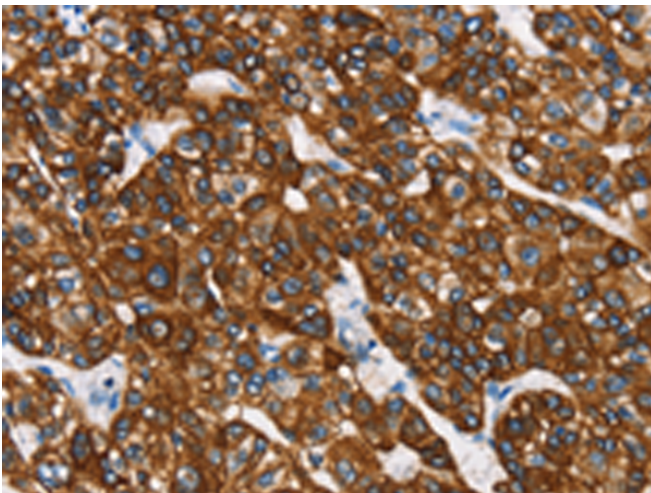
**纯化:** Antigen affinity purification

**种属反应性:** Human, Mouse, Rat

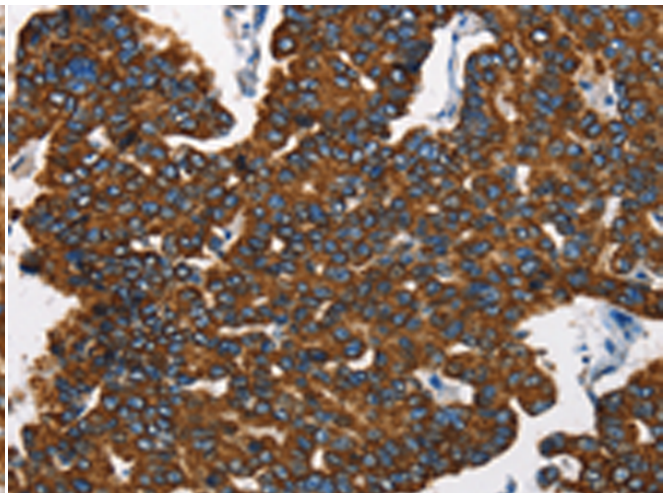
**成分:** PBS (without Mg<sup>2+</sup> and Ca<sup>2+</sup>), pH 7.4, 150 mM NaCl, 0.05% Sodium Azide and 40% glycerol

**研究领域:** Signal Transduction

**储存和运输:** Store at -20°C. Avoid repeated freezing and thawing



Immunohistochemistry analysis of paraffin-embedded Human liver cancer tissue using 216336(KRT8 Antibody) at a dilution of 1/40(Cell membrane and Cytoplasm).



Immunohistochemistry analysis of paraffin-embedded Human breast cancer tissue using 216336(Anti-KRT8 Antibody) at a dilution of 1/40.