

KRT7 RABBIT PAB

货号: S221167

产品全名: KRT7 兔多抗

基因符号: K7; CK7; SCL; K2C7

UNIPROT ID: P08729 (Gene Accession - NP_005547)

背景: The protein encoded by this gene is a member of the keratin gene family. The type II cytokeratins consist of basic or neutral proteins which are arranged in pairs of heterotypic keratin chains coexpressed during differentiation of simple and stratified epithelial tissues. This type II cytokeratin is specifically expressed in the simple epithelia lining the cavities of the internal organs and in the gland ducts and blood vessels. The genes encoding the type II cytokeratins are clustered in a region of chromosome 12q12-q13. Alternative splicing may result in several transcript variants; however, not all variants have been fully described.

抗原: Synthetic peptide of human KRT7

经过测试的应用: ELISA, WB, IHC

推荐稀释比: IHC: 25-100;WB: 200-1000;ELISA: 5000-10000

种属反应性: Rabbit

克隆性: Rabbit Polyclonal

亚型: Immunogen-specific rabbit IgG

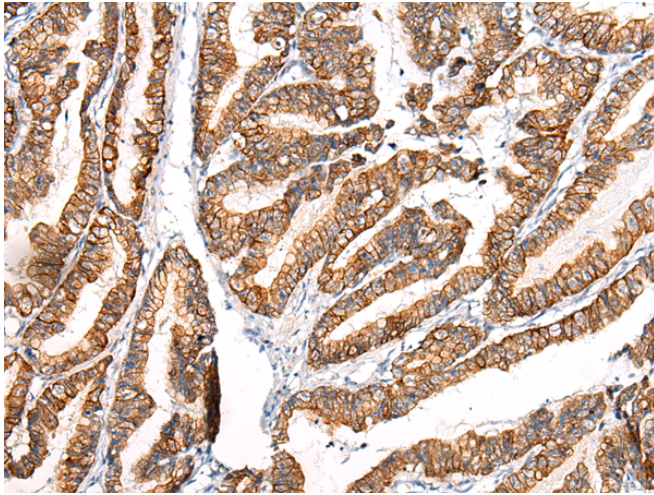
纯化: Antigen affinity purification

种属反应性: Human

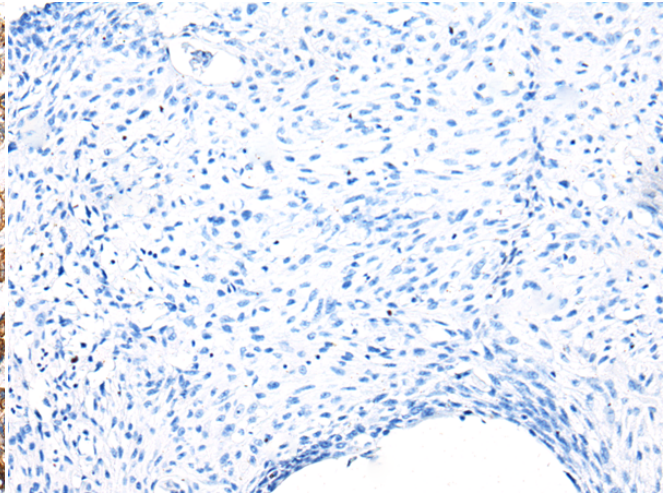
成分: PBS (without Mg²⁺ and Ca²⁺), pH 7.4, 150 mM NaCl, 0.05% Sodium Azide and 40% glycerol

研究领域: Signal Transduction

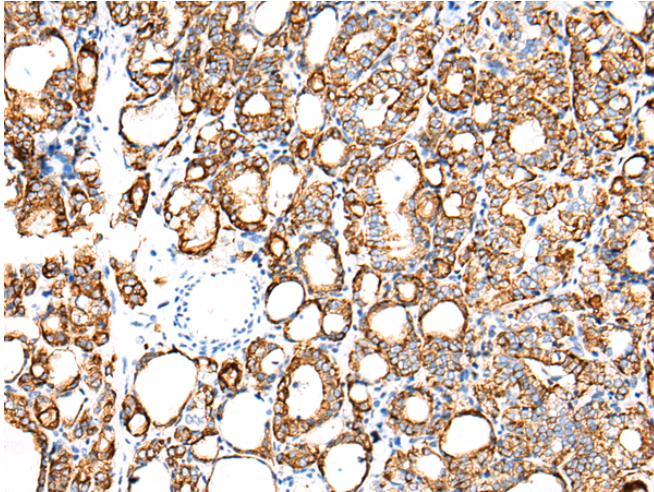
储存和运输: Store at -20°C. Avoid repeated freezing and thawing



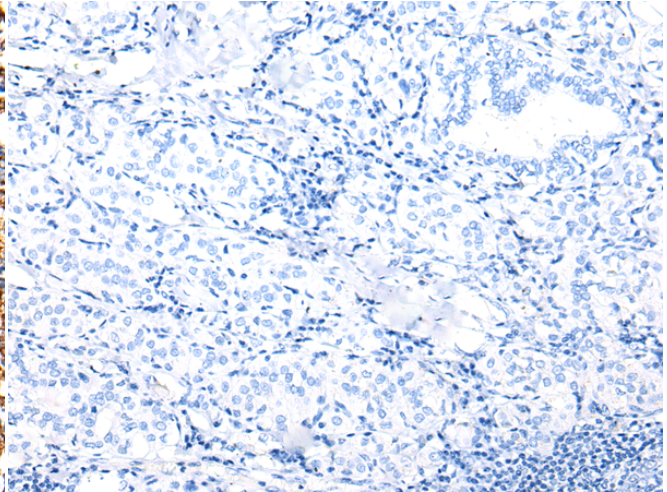
Immunohistochemistry analysis of paraffin embedded Human esophagus cancer tissue using 221167(KRT7 Antibody) at a dilution of 1/20(Cytoplasm and Cell membrane).



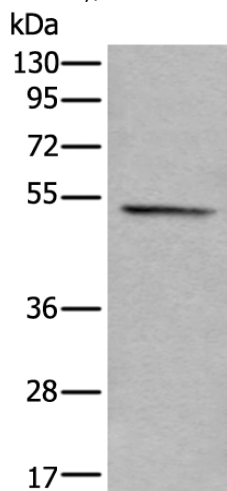
In comparison with the IHC on the left, the same paraffin-embedded Human esophagus cancer tissue is first treated with the synthetic peptide and then with 221167(Anti-KRT7 Antibody) at dilution 1/20.



The image on the left is immunohistochemistry of paraffin-embedded Human thyroid cancer tissue using 221167(Anti-KRT7 Antibody) at a dilution of 1/20.



In comparison with the IHC on the left, the same paraffin-embedded Human thyroid cancer tissue is first treated with synthetic peptide and then with D262649(Anti-KRT7 Antibody) at dilution 1/20.



Gel: 8%SDS-PAGE, Lysate: 40 µg;
Lane: Hela cell lysate;
Primary antibody: 221167(KRT7 Antibody) at dilution 1/200;
Secondary antibody: Goat anti rabbit IgG at 1/8000 dilution;
Exposure time: 3 seconds



Product Description

Pioneering GTPase and Oncogene Product Development since 2010
