

KRT40 RABBIT PAB

货号: S216340

产品全名: KRT40 兔多抗

基因符号: K40; KA36; CK-40

UNIPROT ID: Q6A162 (Gene Accession - BC130396)

背景: This gene encodes a member of the type I (acidic) keratin family, which belongs to the superfamily of intermediate filament (IF) proteins. Keratins are heteropolymeric structural proteins which form the intermediate filament. These filaments, along with actin microfilaments and microtubules, compose the cytoskeleton of epithelial cells. The type I keratin genes are clustered in a region of chromosome 17q12-q21.

抗原: Fusion protein of human KRT40

经过测试的应用: ELISA, IHC

推荐稀释比: IHC: 25-100; ELISA: 2000-5000

种属反应性: Rabbit

克隆性: Rabbit Polyclonal

亚型: Immunogen-specific rabbit IgG

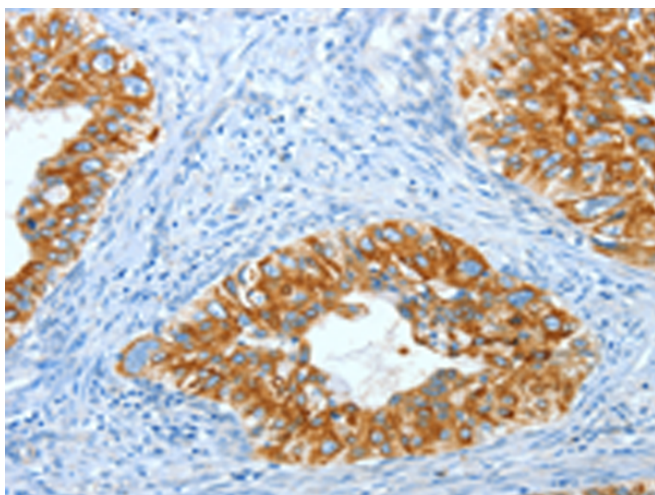
纯化: Antigen affinity purification

种属反应性: Human, Mouse, Rat

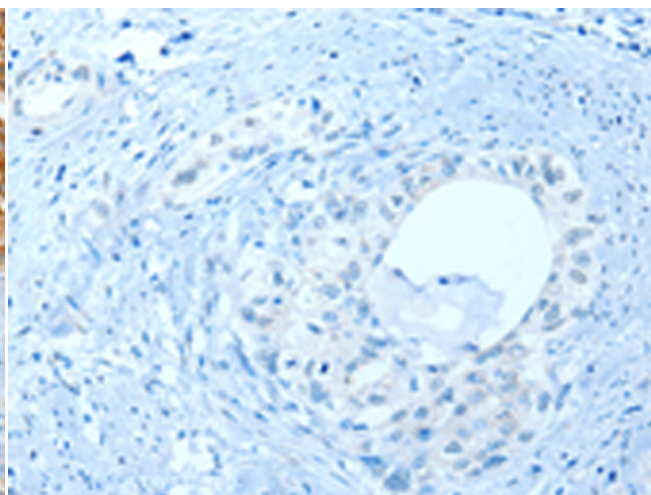
成分: PBS (without Mg²⁺ and Ca²⁺), pH 7.4, 150 mM NaCl, 0.05% Sodium Azide and 40% glycerol

研究领域: Signal Transduction

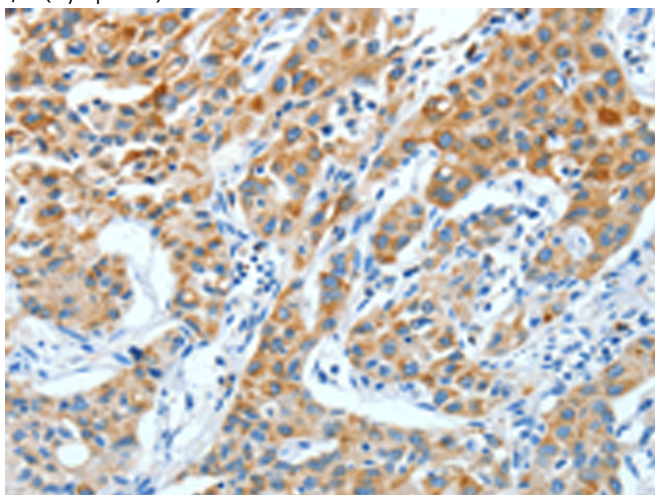
储存和运输: Store at -20°C. Avoid repeated freezing and thawing



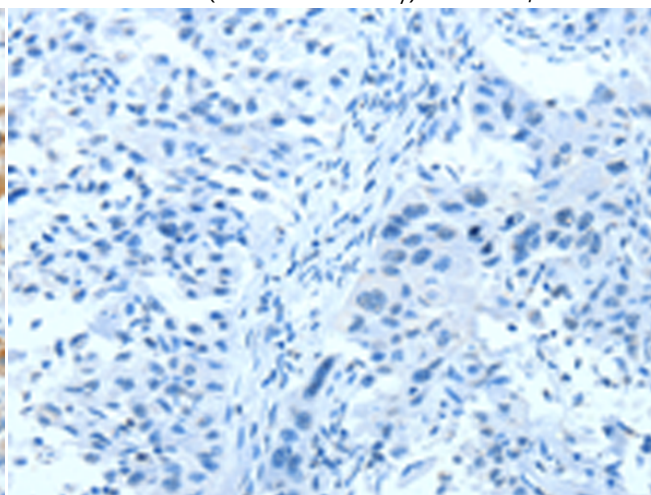
Immunohistochemistry analysis of paraffin embedded Human cervical cancer tissue using 216340(KRT40 Antibody) at a dilution of 1/30(Cytoplasm).



In comparison with the IHC on the left, the same paraffin-embedded Human cervical cancer tissue is first treated with the fusion protein and then with 216340(Anti-KRT40 Antibody) at dilution 1/30.



The image on the left is immunohistochemistry of paraffin-embedded Human lung cancer tissue using 216340(Anti-KRT40 Antibody) at a dilution of 1/30.



In comparison with the IHC on the left, the same paraffin-embedded Human lung cancer tissue is first treated with fusion protein and then with D220239(Anti-KRT40 Antibody) at dilution 1/30.



Product Description

Pioneering GTPase and Oncogene Product Development since 2010
