

KRT17 RABBIT PAB

货号: S216337

产品全名: KRT17 兔多抗

基因符号: PC; K17; PC2; 39.1; CK-17; PCHC1

UNIPROT ID: Q04695 (Gene Accession - BC000159)

背景: This gene encodes the type I intermediate filament chain keratin 17, expressed in nail bed, hair follicle, sebaceous glands, and other epidermal appendages. Mutations in this gene lead to Jackson-Lawler type pachyonychia congenita and steatocystoma multiplex.

抗原: Fusion protein of human KRT17

经过测试的应用: ELISA, IHC

推荐稀释比: IHC: 25-100; ELISA: 5000-10000

种属反应性: Rabbit

克隆性: Rabbit Polyclonal

亚型: Immunogen-specific rabbit IgG

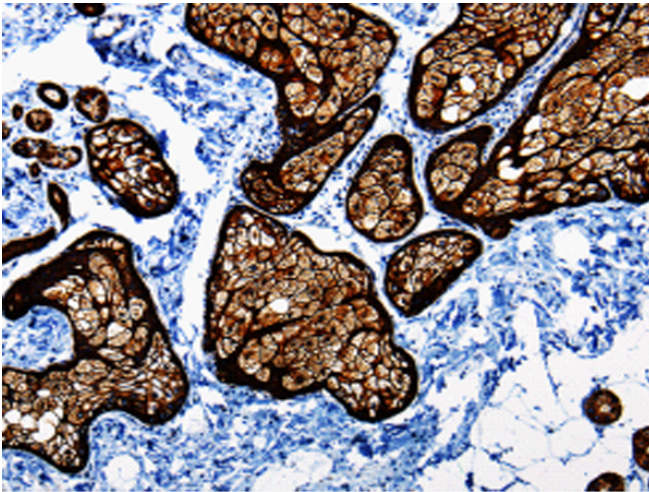
纯化: Antigen affinity purification

种属反应性: Human, Mouse, Rat

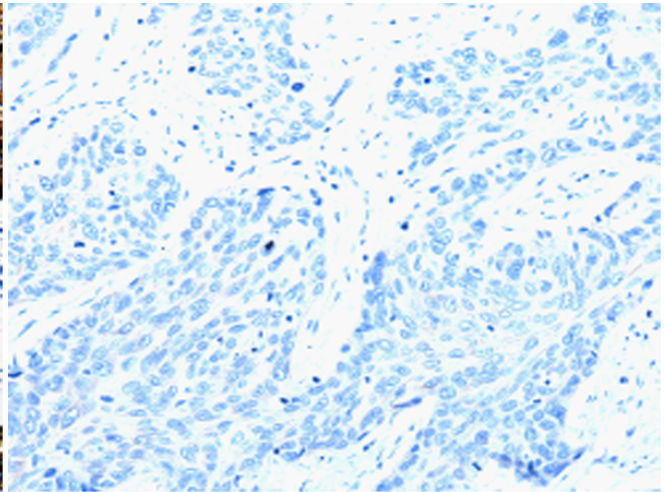
成分: PBS (without Mg²⁺ and Ca²⁺), pH 7.4, 150 mM NaCl, 0.05% Sodium Azide and 40% glycerol

研究领域: Signal Transduction

储存和运输: Store at -20°C. Avoid repeated freezing and thawing



Immunohistochemistry analysis of paraffin embedded Human skin tissue using 216337(KRT17 Antibody) at a dilution of 1/30(Cell membrane, Cytoplasm).



In comparison with the IHC on the left, the same paraffin-embedded Human skin tissue is first treated with the fusion protein and then with 216337(Anti-KRT17 Antibody) at dilution 1/30.