

KRT12 RABBIT PAB

货号: S222293

产品全名: KRT12 兔多抗

基因符号: K12

UNIPROT ID: Q99456 (Gene Accession - NP_000214)

背景: KRT12 encodes the type I intermediate filament chain keratin 12, expressed in corneal epithelia. Mutations in this gene lead to Meesmann corneal dystrophy.

抗原: Synthetic peptide of human KRT12

经过测试的应用: ELISA, IHC

推荐稀释比: IHC: 25-50; ELISA: 5000-10000

种属反应性: Rabbit

克隆性: Rabbit Polyclonal

亚型: Immunogen-specific rabbit IgG

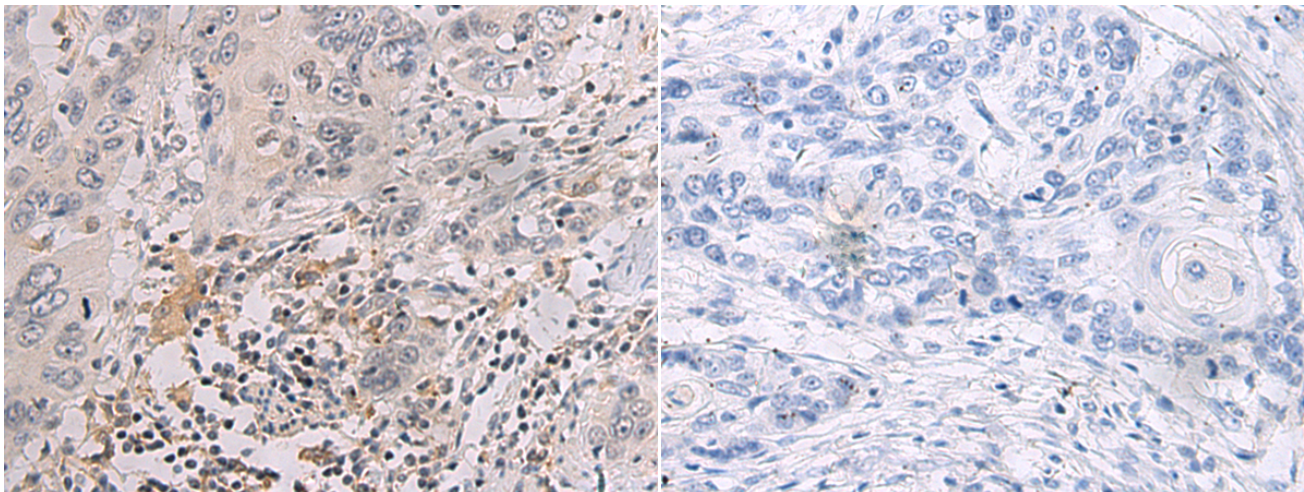
纯化: Antigen affinity purification

种属反应性: Human

成分: PBS (without Mg²⁺ and Ca²⁺), pH 7.4, 150 mM NaCl, 0.05% Sodium Azide and 40% glycerol

研究领域: Signal Transduction, Neuroscience

储存和运输: Store at -20°C. Avoid repeated freezing and thawing



Immunohistochemistry analysis of paraffin embedded Human esophagus cancer tissue using 222293(KRT12 Antibody) at a dilution of 1/25(Cytoplasm).

In comparison with the IHC on the left, the same paraffin-embedded Human esophagus cancer tissue is first treated with the synthetic peptide and then with 222293(Anti-KRT12 Antibody) at dilution 1/25.