

KRCC1 RABBIT PAB

货号: S219298

产品全名: KRCC1 兔多抗

基因符号: CHBP2

UNIPROT ID: Q9NPI7 (Gene Accession - BC015927)

背景: KRCC1 (lysine-rich coiled-coil 1), also known as CHBP2 (cryptogenic hepatitis-binding protein 2), is a 259 amino acid protein that is encoded by a gene located on human chromosome 2p11.2. Consisting of 237 million bases, chromosome 2 is the second largest human chromosome and encodes over 1,400 genes. A number of genetic diseases are linked to genes on chromosome 2. Harlequin ichthyosis, a rare and morbid skin deformity, is associated with mutations in the ABCA12 gene. The lipid metabolic disorder sitosterolemia is associated with ABCG5 and ABCG8. An extremely rare recessive genetic disorder, Alström syndrome, is due to mutations in the ALMS1 gene. Interestingly, chromosome 2 contains what appears to be a vestigial second centromere and vestigial telomeres which gives credence to the hypothesis that human chromosome 2 is the result of an ancient fusion of two ancestral chromosomes seen in modern form today in apes.

抗原: Fusion protein of human KRCC1

经过测试的应用: ELISA, WB, IHC

推荐稀释比: IHC: 100-300; WB: 500-2000; ELISA: 5000-10000

种属反应性: Rabbit

克隆性: Rabbit Polyclonal

亚型: Immunogen-specific rabbit IgG

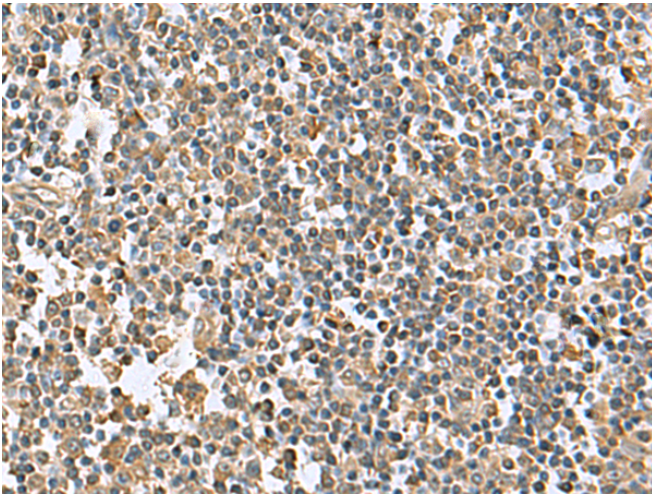
纯化: Antigen affinity purification

种属反应性: Human, Mouse

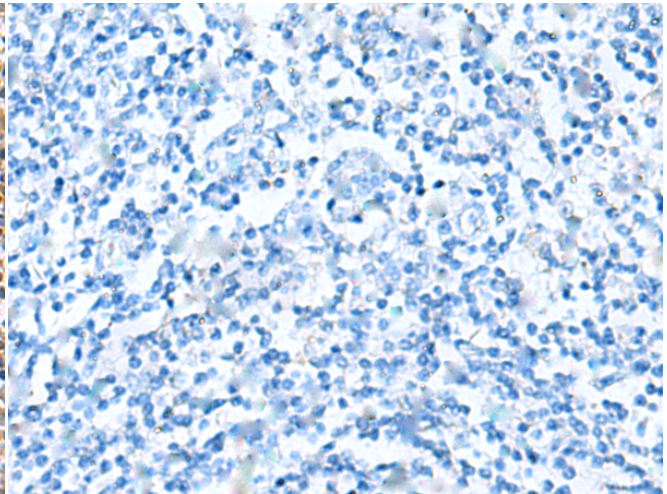
成分: PBS (without Mg²⁺ and Ca²⁺), pH 7.4, 150 mM NaCl, 0.05% Sodium Azide and 40% glycerol

研究领域: Cell Biology

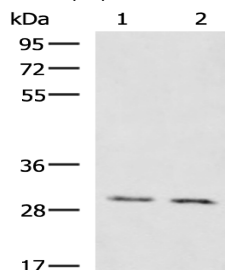
储存和运输: Store at -20°C. Avoid repeated freezing and thawing



Immunohistochemistry analysis of paraffin embedded Human tonsil tissue using 219298 (KRCC1 Antibody) at a dilution of 1/95 (Cytoplasm).



In comparison with the IHC on the left, the same paraffin-embedded Human tonsil tissue is first treated with the fusion protein and then with 219298 (Anti-KRCC1 Antibody) at dilution 1/95.



Gel: 8% SDS-PAGE, Lysate: 40 µg;

Lane 1-2: Mouse brain tissue, Mouse kidney tissue lysates;

Primary antibody: 219298 (KRCC1 Antibody) at dilution 1/1350;

Secondary antibody: HRP-conjugated Goat anti rabbit IgG at 1/5000 dilution;

Exposure time: 1 minute



Product Description

Pioneering GTPase and Oncogene Product Development since 2010
