

KLK7 RABBIT PAB

货号: S216607

产品全名: KLK7 兔多抗

基因符号: hK7, SCCE, PRSS6

UNIPROT ID: P49862 (Gene Accession - BC032005)

背景: This gene encodes a member of the kallikrein subfamily of serine proteases. These enzymes have diverse physiological functions and many kallikrein genes are biomarkers for cancer. The encoded protein has chymotrypsin-like activity and plays a role in the proteolysis of intercellular cohesive structures that precedes desquamation, the shedding of the outermost layer of the epidermis. The encoded protein may play a role in cancer invasion and metastasis, and increased expression of this gene is associated with unfavorable prognosis and progression of several types of cancer. Polymorphisms in this gene may play a role in the development of atopic dermatitis. Alternatively spliced transcript variants encoding multiple isoforms have been observed for this gene, which is one of fifteen kallikrein subfamily members located in a gene cluster on chromosome 19.

抗原: Fusion protein of human KLK7

经过测试的应用: ELISA, WB, IHC

推荐稀释比: IHC: 25-100;WB: 500-2000;ELISA: 2000-5000

种属反应性: Rabbit

克隆性: Rabbit Polyclonal

亚型: Immunogen-specific rabbit IgG

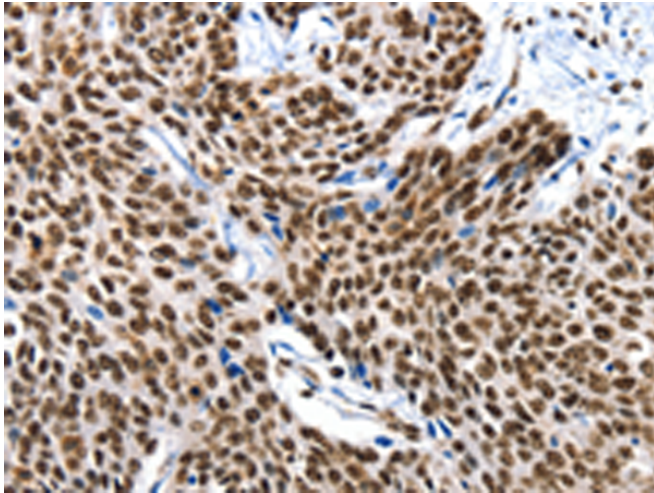
纯化: Antigen affinity purification

种属反应性: Human, Mouse

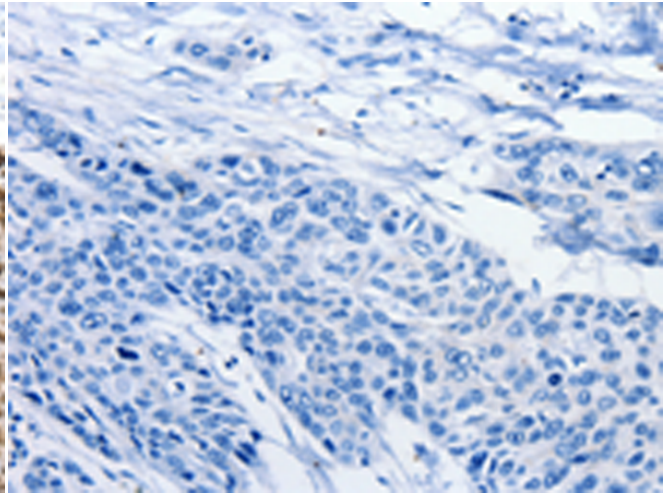
成分: PBS (without Mg²⁺ and Ca²⁺), pH 7.4, 150 mM NaCl, 0.05% Sodium Azide and 40% glycerol

研究领域: Signal Transduction, Cell Biology

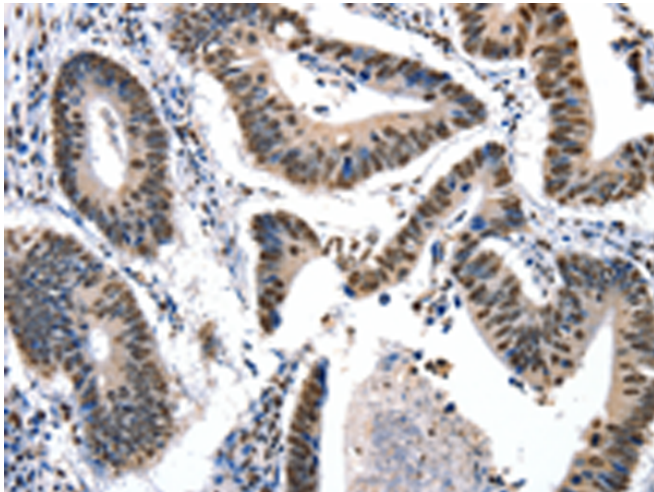
储存和运输: Store at -20°C. Avoid repeated freezing and thawing



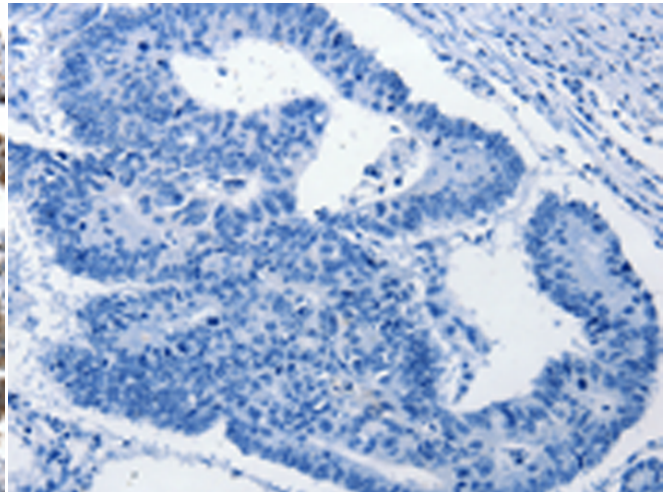
Immunohistochemistry analysis of paraffin embedded Human esophagus cancer tissue using 216607(KLK7 Antibody) at a dilution of 1/10(Cytoplasm, Nucleus).



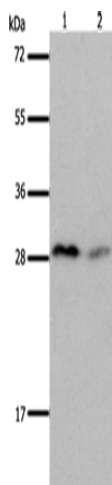
In comparison with the IHC on the left, the same paraffin-embedded Human esophagus cancer tissue is first treated with the fusion protein and then with 216607(Anti-KLK7 Antibody) at dilution 1/10.



The image on the left is immunohistochemistry of paraffin-embedded Human colon cancer tissue using 216607(Anti-KLK7 Antibody) at a dilution of 1/10.



In comparison with the IHC on the left, the same paraffin-embedded Human colon cancer tissue is first treated with fusion protein and then with D220906(Anti-KLK7 Antibody) at dilution 1/10.



Gel: 12%SDS-PAGE, Lysate: 40 µg;
Lane 1-2: Mouse brain tissue, Mouse kidney tissue;
Primary antibody: 216607(KLK7 Antibody) at dilution 1/600;
Secondary antibody: Goat anti rabbit IgG at 1/8000 dilution;
Exposure time: 20 seconds



Product Description

Pioneering GTPase and Oncogene Product Development since 2010
