

KLK14 RABBIT PAB

货号: S220662

产品全名: KLK14 兔多抗

基因符号: KLK-L6

UNIPROT ID: Q9P0G3 (Gene Accession - NP_071329)

背景: Kallikreins are a subgroup of serine proteases having diverse physiological functions. Growing evidence suggests that many kallikreins are implicated in carcinogenesis and some have potential as novel cancer and other disease biomarkers. This gene is one of the fifteen kallikrein subfamily members located in a cluster on chromosome 19. An additional transcript variant has been described but its full length nature has not been determined.

抗原: Synthetic peptide of human KLK14

经过测试的应用: ELISA, WB, IHC

推荐稀释比: IHC: 50-200;WB: 200-1000;ELISA: 1000-2000

种属反应性: Rabbit

克隆性: Rabbit Polyclonal

亚型: Immunogen-specific rabbit IgG

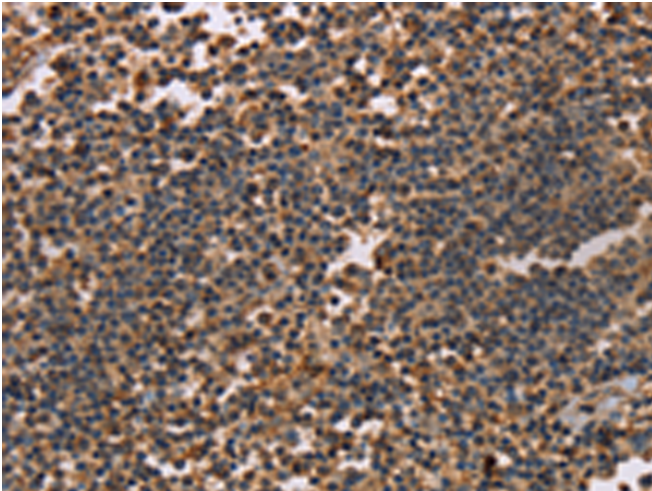
纯化: Antigen affinity purification

种属反应性: Human

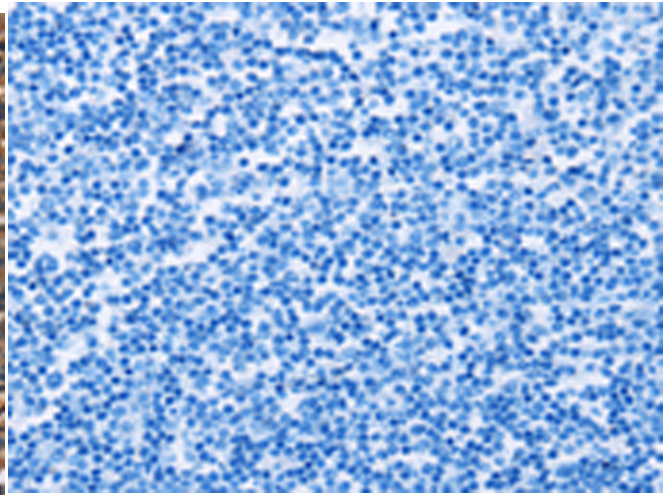
成分: PBS (without Mg²⁺ and Ca²⁺), pH 7.4, 150 mM NaCl, 0.05% Sodium Azide and 40% glycerol

研究领域: Signal Transduction, Cell Biology

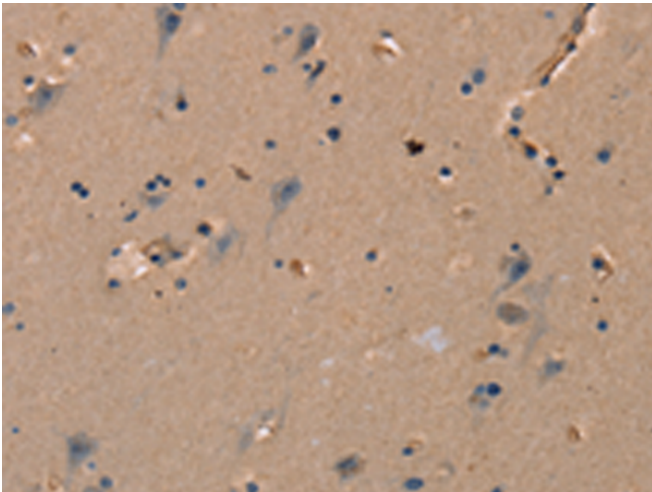
储存和运输: Store at -20°C. Avoid repeated freezing and thawing



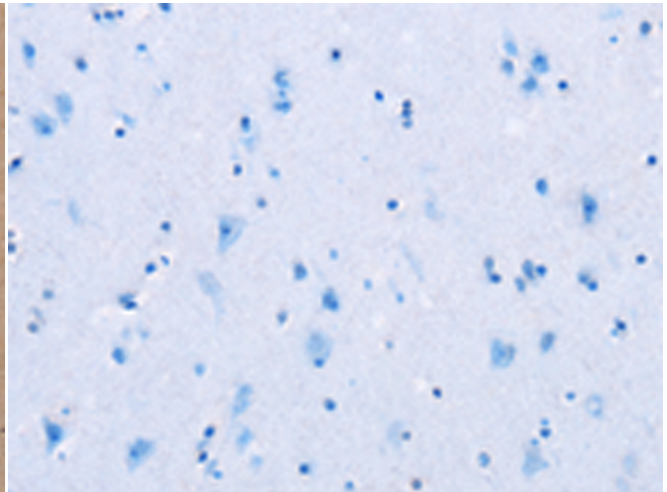
Immunohistochemistry analysis of paraffin embedded Human tonsil tissue using 220662(KLK14 Antibody) at a dilution of 1/40(Cytoplasm).



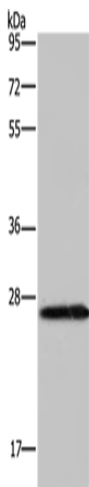
In comparison with the IHC on the left, the same paraffin-embedded Human tonsil tissue is first treated with the synthetic peptide and then with 220662(Anti-KLK14 Antibody) at dilution 1/40.



The image on the left is immunohistochemistry of paraffin-embedded Human brain tissue using 220662(Anti-KLK14 Antibody) at a dilution of 1/40.



In comparison with the IHC on the left, the same paraffin-embedded Human brain tissue is first treated with synthetic peptide and then with D261840(Anti-KLK14 Antibody) at dilution 1/40.



Gel: 10%SDS-PAGE, Lysate: 40 µg;
Lane: PC3 cells;
Primary antibody: 220662(KLK14 Antibody) at dilution 1/200;
Secondary antibody: Goat anti rabbit IgG at 1/8000 dilution;
Exposure time: 2 minutes



Product Description

Pioneering GTPase and Oncogene Product Development since 2010
