

KLHL29 RABBIT PAB

货号: S219485

产品全名: KLHL29 兔多抗

基因符号: KBTBD9

UNIPROT ID: Q96CT2 (Gene Accession - BC015667)

背景: The function of this protein remains unknown.

抗原: Fusion protein of human KLHL29

经过测试的应用: ELISA, IHC

推荐稀释比: IHC: 100-300; ELISA: 5000-10000

种属反应性: Rabbit

克隆性: Rabbit Polyclonal

亚型: Immunogen-specific rabbit IgG

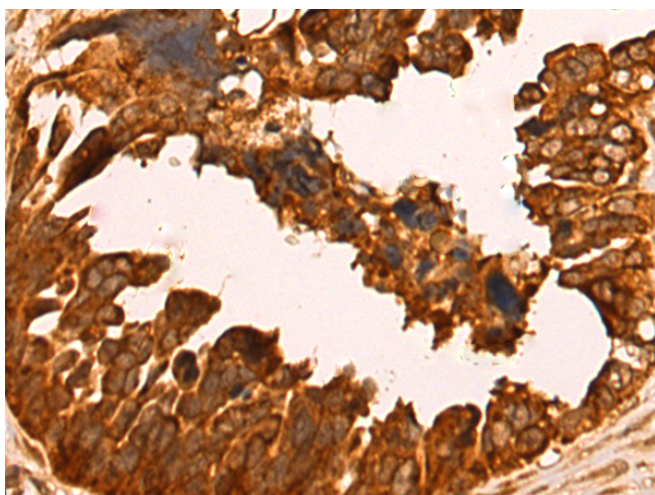
纯化: Antigen affinity purification

种属反应性: Human, Mouse

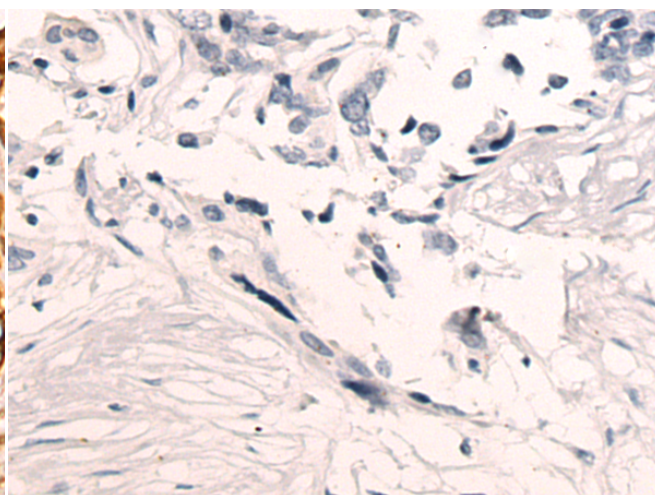
成分: PBS (without Mg²⁺ and Ca²⁺), pH 7.4, 150 mM NaCl, 0.05% Sodium Azide and 40% glycerol

研究领域: Epigenetics and Nuclear Signaling

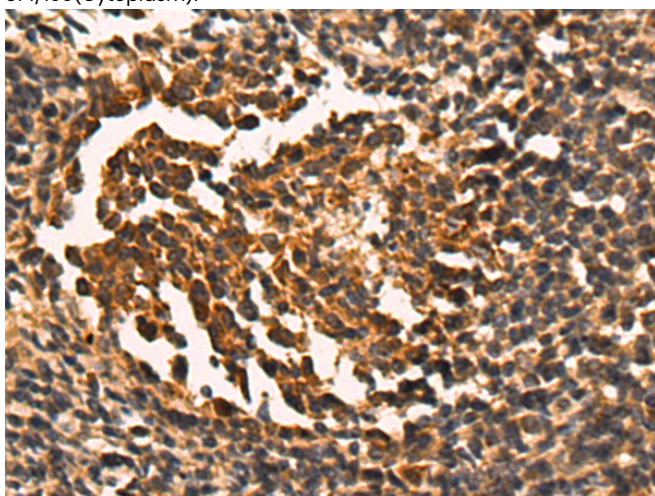
储存和运输: Store at -20°C. Avoid repeated freezing and thawing



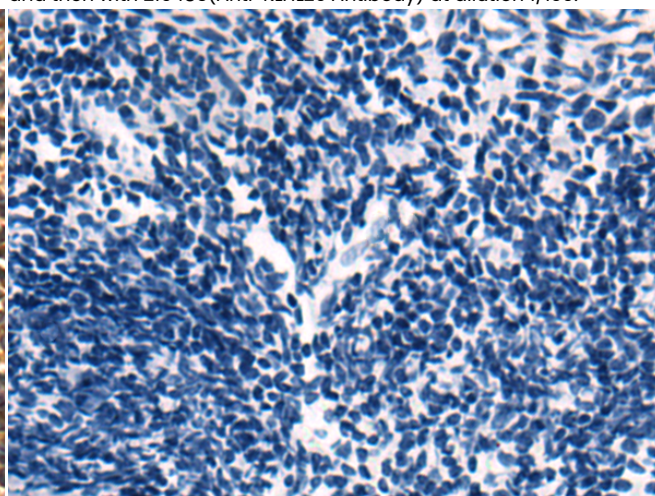
Immunohistochemistry analysis of paraffin embedded Human colorectal cancer tissue using 219485(KLHL29 Antibody) at a dilution of 1/100(Cytoplasm).



In comparison with the IHC on the left, the same paraffin-embedded Human colorectal cancer tissue is first treated with the fusion protein and then with 219485(Anti-KLHL29 Antibody) at dilution 1/100.



The image on the left is immunohistochemistry of paraffin-embedded Human tonsil tissue using 219485(Anti-KLHL29 Antibody) at a dilution of 1/100.



In comparison with the IHC on the left, the same paraffin-embedded Human tonsil tissue is first treated with fusion protein and then with D227349(Anti-KLHL29 Antibody) at dilution 1/100.



Product Description

Pioneering GTPase and Oncogene Product Development since 2010
