

## KLHDC2 RABBIT PAB

货号: S218687

产品全名: KLHDC2 兔多抗

基因符号: LCP; HCLP1; HCLP-1

**UNIPROT ID:** Q9Y2U9 (Gene Accession - BC002335)

背景: Represses CREB3-mediated transcription by interfering with CREB3-DNA binding.

抗原: Fusion protein of human KLHDC2

经过测试的应用: ELISA, IHC

推荐稀释比: IHC: 30-150; ELISA: 5000-10000

种属反应性: Rabbit

克隆性: Rabbit Polyclonal

亚型: Immunogen-specific rabbit IgG

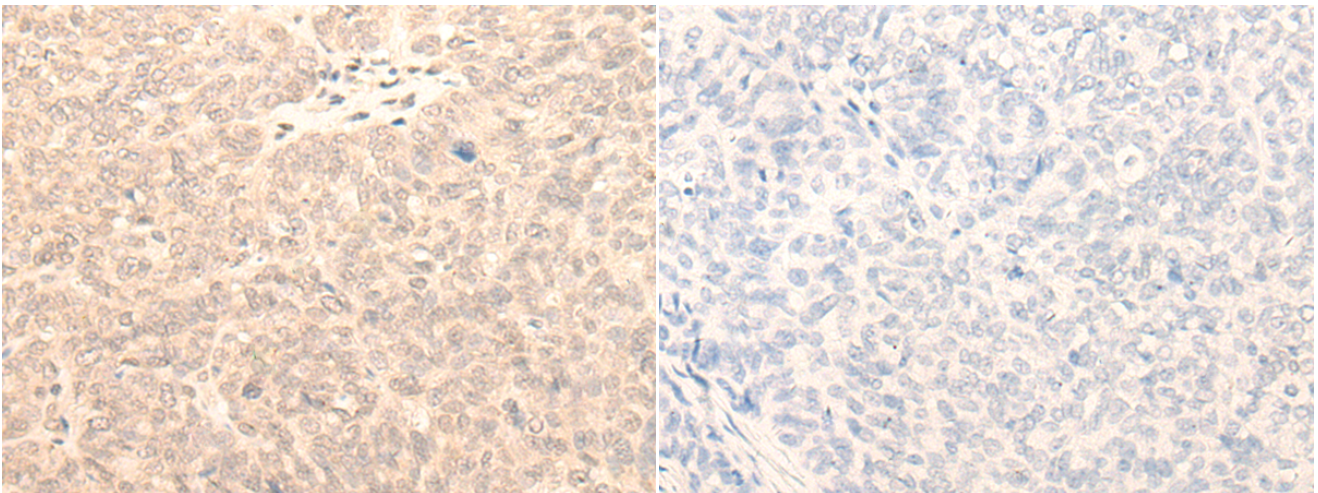
纯化: Antigen affinity purification

种属反应性: Human, Mouse, Rat

成分: PBS (without Mg<sup>2+</sup> and Ca<sup>2+</sup>), pH 7.4, 150 mM NaCl, 0.05% Sodium Azide and 40% glycerol

研究领域: Epigenetics and Nuclear Signaling

储存和运输: Store at -20°C. Avoid repeated freezing and thawing



Immunohistochemistry analysis of paraffin embedded Human ovarian cancer tissue using 218687(KLHDC2 Antibody) at a dilution of 1/20(Nucleus).

In comparison with the IHC on the left, the same paraffin-embedded Human ovarian cancer tissue is first treated with the fusion protein and then with 218687(Anti-KLHDC2 Antibody) at dilution 1/20.