

## KLF4 RABBIT MAB

货号: N263395

产品全名: KLF4 兔单克隆抗体

基因符号 EZF; Zie; Klf

**UNIPROT ID:** Q60793

背景: Transcription factor; can act both as activator and as repressor.  
Binds the 5'-CACCC-3' core sequence.

抗原: Recombinant protein of mouse KLF4

经过测试的应用: WB,IHC-P,IP

推荐稀释比: WB: 1/500-1/1000 IHC: 1/50-1/100 IP: 1/20

种属反应性: Rabbit

克隆性: Rabbit Monoclonal

克隆编号: R03-218

分子量: Calculated MW: 52 kDa; Observed MW: 52 kDa

亚型: IgG

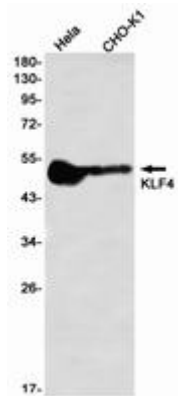
纯化: Affinity Purified

种属反应性: Human,Mouse,Hamster

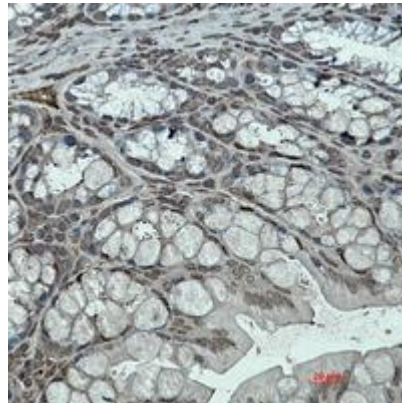
成分: PBS (without Mg<sup>2+</sup> and Ca<sup>2+</sup>), pH 7.3 containing 50% glycerol,  
0.5% BSA and 0.02% sodium azide

研究领域: Epigenetics and Nuclear Signaling

储存和运输: Store at -20°C. Avoid repeated freezing and thawing



Western blot analysis of KLF4 in HeLa, CHO-K1 lysates using KLF4 antibody.



Immunohistochemistry analysis of paraffin-embedded mouse colon using KLF4 antibody. High-pressure and temperature Sodium Citrate pH 6.0 was used for antigen retrieval.