

KLF17 RABBIT PAB

货号: S217096

产品全名: KLF17 兔多抗

基因符号: ZNF393; Zfp393; RP4-675G8.1

UNIPROT ID: Q5JT82 (Gene Accession - BC049844)

背景: Krueppel-like factor 17 is a protein that in humans is encoded by the KLF17 gene. Transcription repressor that binds to the promoter of target genes and prevents their expression. Acts as a negative regulator of epithelial-mesenchymal transition and metastasis in breast cancer. Specifically binds the 5'-CACCC-3' sequence in the promoter of ID1, a key metastasis regulator in breast cancer, and repress its expression. May be a germ cell-specific transcription factor that plays important roles in spermatid differentiation and oocyte development.

抗原: Fusion protein of human KLF17

经过测试的应用: ELISA, IHC

推荐稀释比: IHC: 25-100; ELISA: 2000-5000

种属反应性: Rabbit

克隆性: Rabbit Polyclonal

亚型: Immunogen-specific rabbit IgG

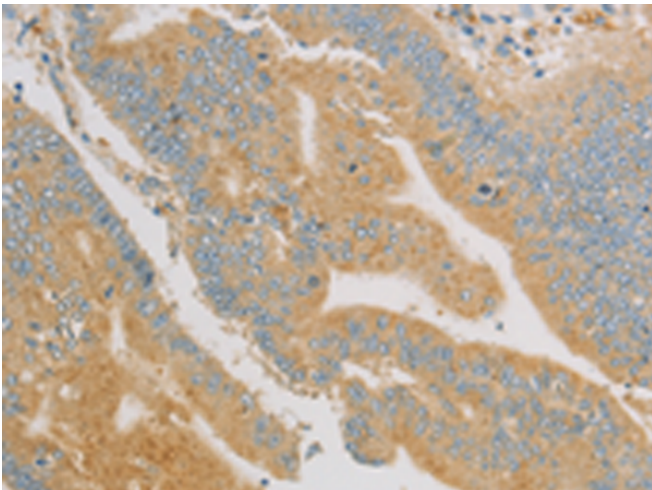
纯化: Antigen affinity purification

种属反应性: Human

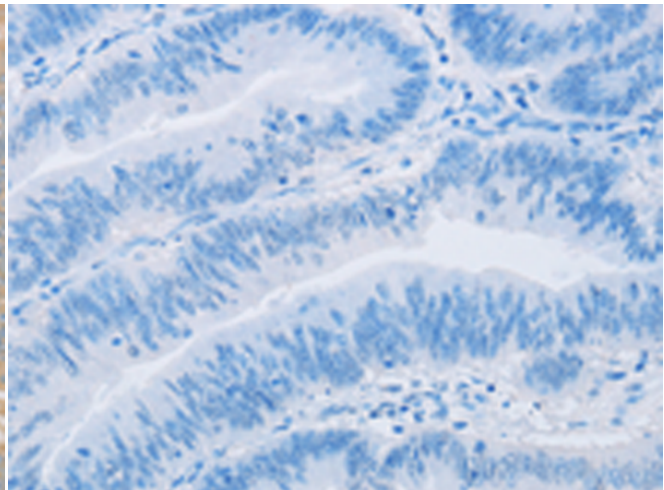
成分: PBS (without Mg²⁺ and Ca²⁺), pH 7.4, 150 mM NaCl, 0.05% Sodium Azide and 40% glycerol

研究领域: Epigenetics and Nuclear Signaling

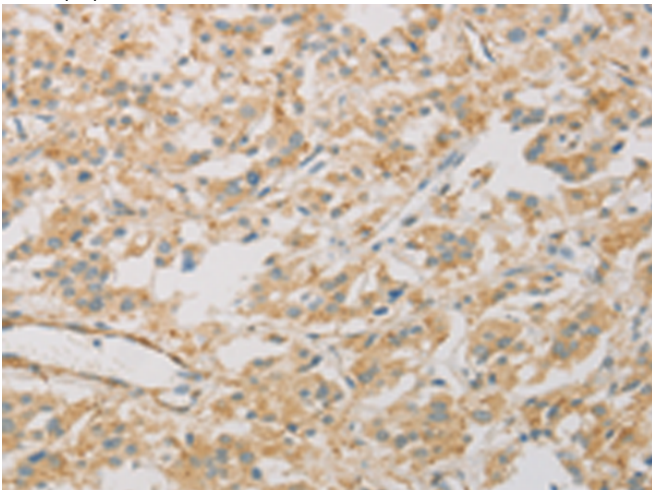
储存和运输: Store at -20°C. Avoid repeated freezing and thawing



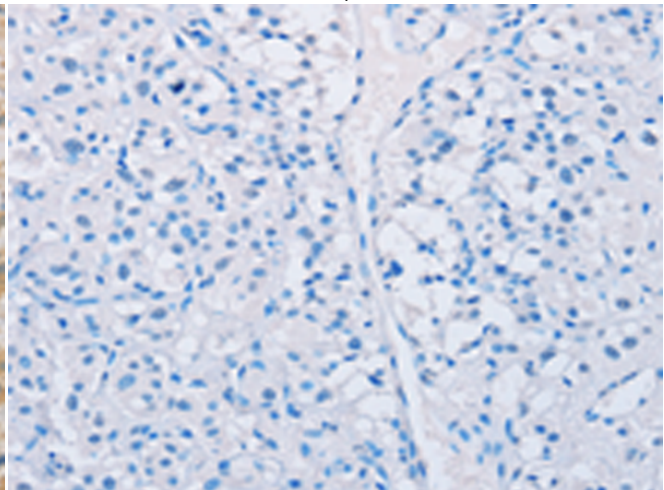
Immunohistochemistry analysis of paraffin embedded Human colon cancer tissue using 217096(KLF17 Antibody) at a dilution of 1/30(Cytoplasm).



In comparison with the IHC on the left, the same paraffin-embedded Human colon cancer tissue is first treated with the fusion protein and then with 217096(Anti-KLF17 Antibody) at dilution 1/30.



The image on the left is immunohistochemistry of paraffin-embedded Human thyroid cancer tissue using 217096(Anti-KLF17 Antibody) at a dilution of 1/30.



In comparison with the IHC on the left, the same paraffin-embedded Human thyroid cancer tissue is first treated with fusion protein and then with D221780(Anti-KLF17 Antibody) at dilution 1/30.



Product Description

Pioneering GTPase and Oncogene Product Development since 2010
