

## KLF13 RABBIT PAB

货号: N225033

产品全名: KLF13 兔多抗

基因符号 KLF13; BTEB3; NSLPI; Krueppel-like factor 13; Basic transcription element-binding protein 3; BTE-binding protein 3; Novel Sp1-like zinc finger transcription factor 1; RANTES factor of late activated T-lymphocytes 1; RFLAT-1; Transcription factor BTEB3; Transcription factor NSLPI

**UNIPROT ID:** Q9Y2Y9

背景: Represses transcription by binding to the BTE site, a GC-rich DNA element, in competition with the activator SP1.

抗原: The antiserum was produced against synthesized peptide derived from human KLF13 around the non-acetylation site of Lys166. AA range:131-180

经过测试的应用: WB,IHC-P,ELISA

推荐稀释比: WB: 1/500-1/1000 IHC: 1/50-1/100 ELISA: 1/10000

种属反应性: Rabbit

克隆性: Rabbit Polyclonal

分子量: Calculated MW: 31 kDa; Observed MW: 31 kDa

亚型: IgG

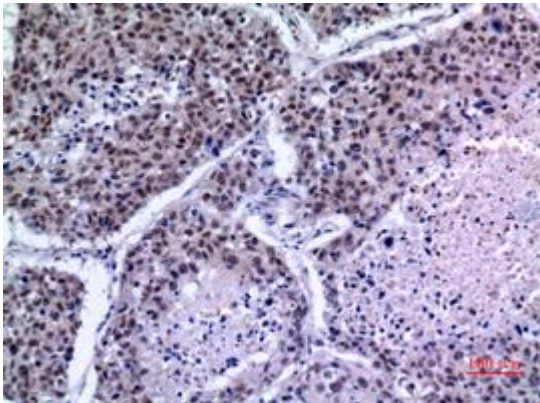
纯化: Affinity Purified

种属反应性: Human,Mouse

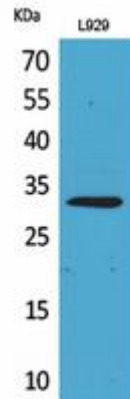
成分: PBS (without Mg<sup>2+</sup> and Ca<sup>2+</sup>), pH 7.3 containing 50% glycerol, 0.5% BSA and 0.02% sodium azide

研究领域: Epigenetics and Nuclear Signaling

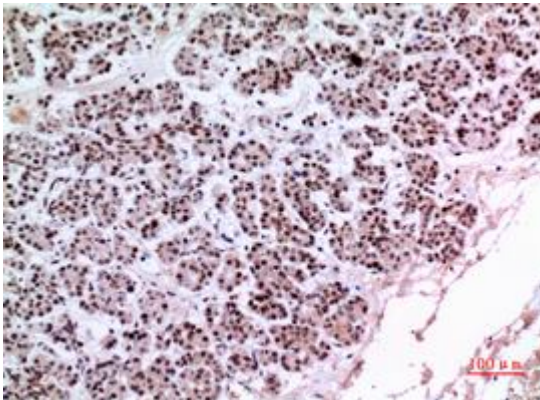
储存和运输: Store at -20°C. Avoid repeated freezing and thawing



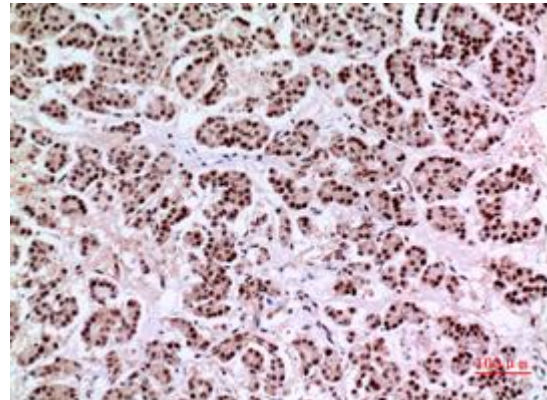
Immunohistochemistry analysis of paraffin-embedded Human lung using KLF13 antibody. High-pressure and temperature Sodium Citrate pH 6.0 was used for antigen retrieval.



Western blot analysis of KLF13 in L929 lysates using KLF13 antibody.



Immunohistochemistry analysis of paraffin-embedded Human pancreas using KLF13 antibody. High-pressure and temperature Sodium Citrate pH 6.0 was used for antigen retrieval.



Immunohistochemistry analysis of paraffin-embedded Human pancreas using KLF13 antibody. High-pressure and temperature Sodium Citrate pH 6.0 was used for antigen retrieval.