

KLF12 RABBIT PAB

货号: N225104

产品全名: KLF12 兔多抗

基因符号 KLF12; AP2REP; HSPC122; Krueppel-like factor 12; Transcriptional repressor AP-2rep

UNIPROT ID: Q9Y4X4

背景: Confers strong transcriptional repression to the AP-2-alpha gene.

抗原: Synthesized peptide derived from the Internal region of human KLF12.

经过测试的应用: WB,IHC-P,ELISA

推荐稀释比: WB: 1/500-1/1000 IHC: 1/50-1/100 ELISA: 1/10000

种属反应性: Rabbit

克隆性: Rabbit Polyclonal

分子量: Calculated MW: 44 kDa; Observed MW: 44 kDa

亚型: IgG

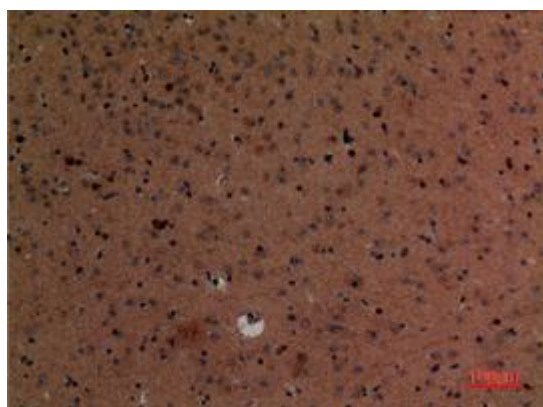
纯化: Affinity Purified

种属反应性: Human,Mouse

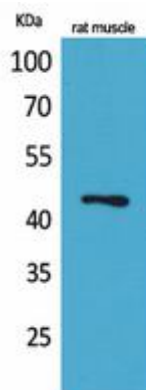
成分: PBS (without Mg²⁺ and Ca²⁺), pH 7.3 containing 50% glycerol, 0.5% BSA and 0.02% sodium azide

研究领域: Epigenetics and Nuclear Signaling

储存和运输: Store at -20°C. Avoid repeated freezing and thawing



Immunohistochemistry analysis of paraffin-embedded mouse brain using KLF12 antibody. High-pressure and temperature Sodium Citrate pH 6.0 was used for antigen retrieval.



Western blot analysis of KLF12 in rat muscle lysates using KLF12 antibody.



Product Description

Pioneering GTPase and Oncogene Product Development since 2010
