

KIR2DL3 RABBIT PAB

货号: S217253

产品全名: KIR2DL3 兔多抗

基因符号 killer cell immunoglobulin like receptor, two Ig domains and long cytoplasmic tail 3

UNIPROT ID: p58; NKAT; GLI83; NKAT2; CD158b; KIR2DL; NKAT2A; NKAT2B; CD158B2; KIR-K7b; KIR-K7c; KIR2DS5; KIRCL23; KIR-023GB (Gene Accession - P43628)

背景: BC032422

抗原: Fusion protein of human KIR2DL3

经过测试的应用: ELISA, IHC

推荐稀释比: IHC: 50-200; ELISA: 2000-5000

种属反应性: Rabbit

克隆性: Rabbit Polyclonal

亚型: Immunogen-specific rabbit IgG

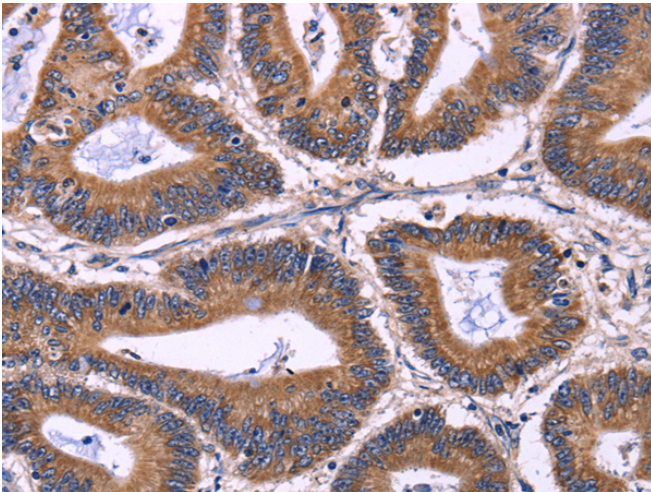
纯化: Antigen affinity purification

种属反应性: Human

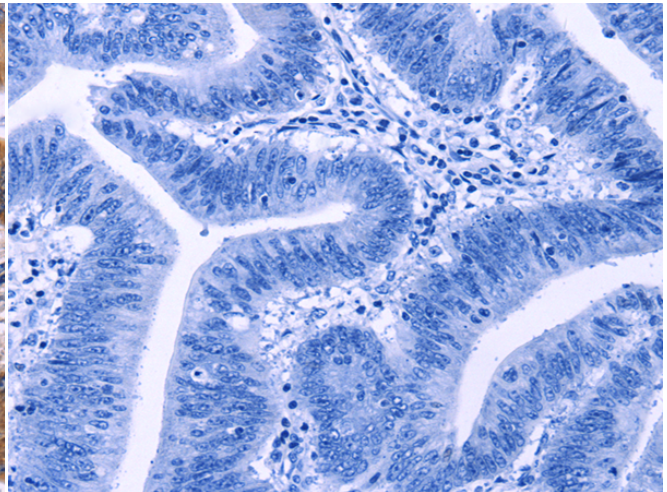
成分: PBS (without Mg²⁺ and Ca²⁺), pH 7.4, 150 mM NaCl, 0.05% Sodium Azide and 40% glycerol

研究领域: Immunology

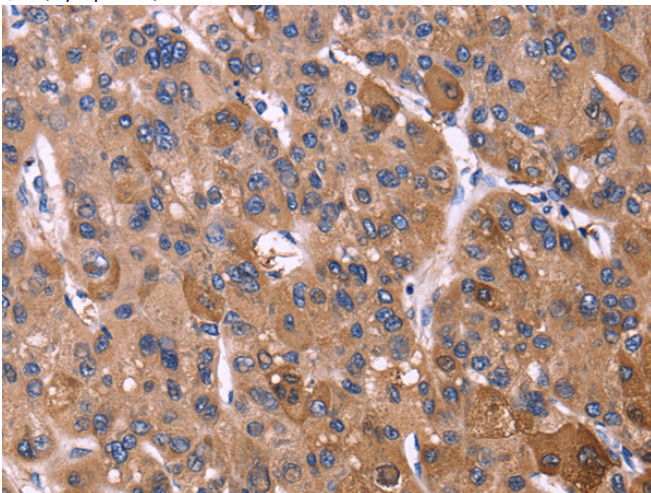
储存和运输: Store at -20°C. Avoid repeated freezing and thawing



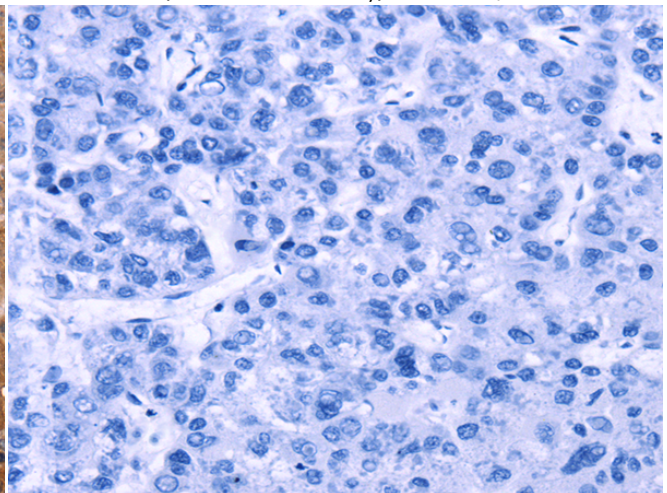
Immunohistochemistry analysis of paraffin embedded Human colon cancer tissue using 217253(KIR2DL3 Antibody) at a dilution of 1/40(Cytoplasm).



In comparison with the IHC on the left, the same paraffin-embedded Human colon cancer tissue is first treated with the fusion protein and then with 217253(Anti-KIR2DL3 Antibody) at dilution 1/40.



The image on the left is immunohistochemistry of paraffin-embedded Human liver cancer tissue using 217253(Anti-KIR2DL3 Antibody) at a dilution of 1/40.



In comparison with the IHC on the left, the same paraffin-embedded Human liver cancer tissue is first treated with fusion protein and then with D222052(Anti-KIR2DL3 Antibody) at dilution 1/40.



Product Description

Pioneering GTPase and Oncogene Product Development since 2010
