

## KIFC1 RABBIT PAB

货号: N225554

产品全名: KIFC1 兔多抗

基因符号 HSET; KNSL2

**UNIPROT ID:** Q9BW19

**背景:** Minus end-directed microtubule-dependent motor required for bipolar spindle formation. May contribute to movement of early endocytic vesicles.

**抗原:** A synthesized peptide derived from human KIFC1

**经过测试的应用:** WB,IHC-P,ICC/IF,IP

**推荐稀释比:** WB: 1/500-1/1000 IHC: 1/50-1/100 IF: 1/50-1/200 IP: 1/20

**种属反应性:** Rabbit

**克隆性:** Rabbit Polyclonal

**分子量:** Calculated MW: 74 kDa; Observed MW: 74 kDa

**亚型:** IgG

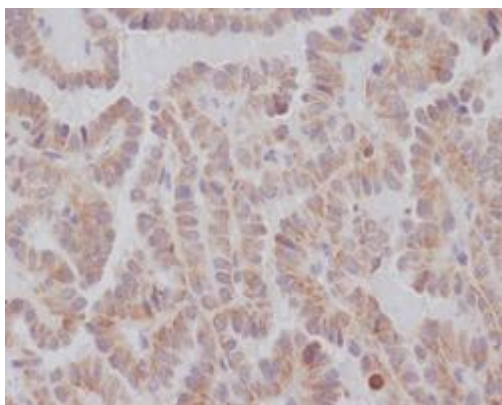
**纯化:** Affinity Chromatography

**种属反应性:** Human

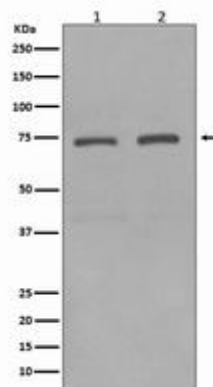
**成分:** PBS (without Mg<sup>2+</sup> and Ca<sup>2+</sup>), pH 7.3 containing 50% glycerol, 0.5% BSA and 0.02% sodium azide

**研究领域:** Signal Transduction

**储存和运输:** Store at -20°C. Avoid repeated freezing and thawing



Immunohistochemistry analysis of paraffin-embedded Human thyroid carcinoma using KIFC1 antibody. High-pressure and temperature Sodium Citrate pH 6.0 was used for antigen retrieval.



Western blot analysis of KIFC1 in (1) HeLa lysates; (2) HepG2 lysates using KIFC1 antibody.



# Product Description

Pioneering GTPase and Oncogene Product Development since 2010

---