

KIFC1 RABBIT MAB

货号: N262448

产品全名: KIFC1 兔单克隆抗体

基因符号 HSET; KNSL2

UNIPROT ID: Q9BW19

背景: Minus end-directed microtubule-dependent motor required for bipolar spindle formation. May contribute to movement of early endocytic vesicles.

抗原: A synthetic peptide of human KIFC1

经过测试的应用: WB,IHC-F,IHC-P,ICC/IF,IP

推荐稀释比: WB: 1/500-1/1000 IHC: 1/50-1/100 IF: 1/50-1/200 IP: 1/20

种属反应性: Rabbit

克隆性: Rabbit Monoclonal

克隆编号: R03-3E4

分子量: Calculated MW: 74 kDa; Observed MW: 74 kDa

亚型: IgG

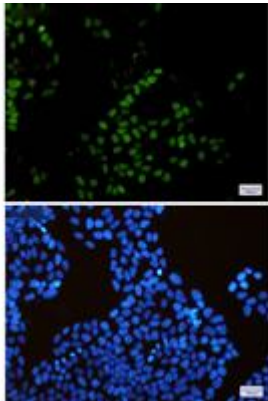
纯化: Affinity Purified

种属反应性: Human,Mouse

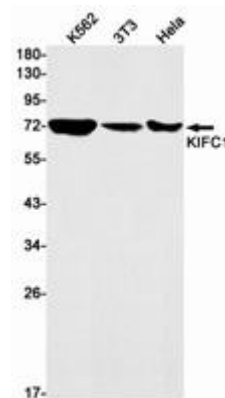
成分: PBS (without Mg²⁺ and Ca²⁺), pH 7.3 containing 50% glycerol, 0.5% BSA and 0.02% sodium azide

研究领域: Signal Transduction

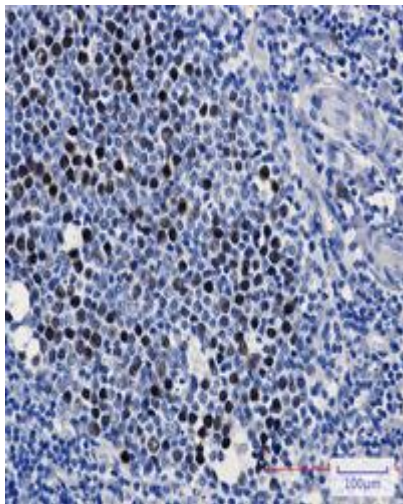
储存和运输: Store at -20°C. Avoid repeated freezing and thawing



Immunocytochemistry analysis of KIFC1 (green) in HeLa using KIFC1 antibody, and DAPI (blue)



Western blot analysis of KIFC1 in K562, 3T3, HeLa lysates using KIFC1 antibody.



Immunohistochemistry analysis of paraffin-embedded Human tonsil using KIFC1 antibody. High-pressure and temperature Sodium Citrate pH 6.0 was used for antigen retrieval.