

KIFAP3 RABBIT MAB

货号: N263394

产品全名: KIFAP3 兔单克隆抗体

基因符号 KAP3; KIF3AP; Kifap3; Kinesin associated protein 3; SMAP

UNIPROT ID: Q92845

背景: Involved in tethering the chromosomes to the spindle pole and in chromosome movement. Binds to the tail domain of the KIF3A/KIF3B heterodimer to form a heterotrimeric KIF3 complex and may regulate the membrane binding of this complex.

抗原: A synthetic peptide of human KIFAP3

经过测试的应用: WB,IHC-P

推荐稀释比: WB: 1/500-1/1000 IHC: 1/50-1/100

种属反应性: Rabbit

克隆性: Rabbit Monoclonal

克隆编号: R03-6C6

分子量: Calculated MW: 91 kDa; Observed MW: 91 kDa

亚型: IgG

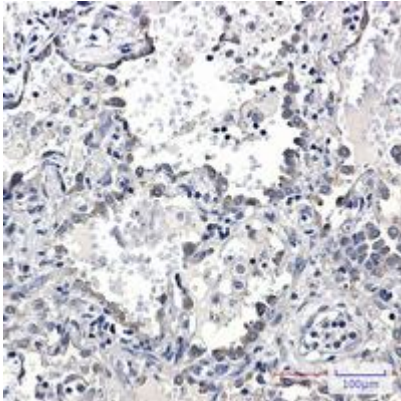
纯化: Affinity Purified

种属反应性: Human,Rat

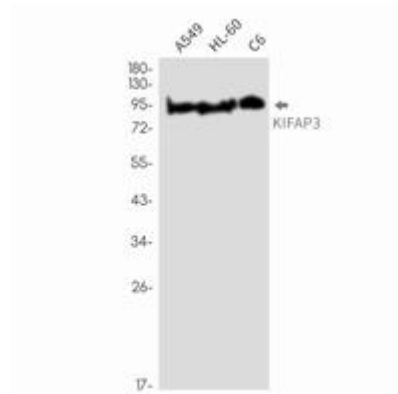
成分: PBS (without Mg²⁺ and Ca²⁺), pH 7.3 containing 50% glycerol, 0.5% BSA and 0.02% sodium azide

研究领域: Epigenetics and Nuclear Signaling

储存和运输: Store at -20°C. Avoid repeated freezing and thawing



Immunohistochemistry analysis of paraffin-embedded Human lung cancer using KIFAP3 antibody. High-pressure and temperature Sodium Citrate pH 6.0 was used for antigen retrieval.



Western blot analysis of KIFAP3 in A549, HL-60, C6 lysates using KIFAP3 antibody.