

## KIF5A RABBIT PAB

**Cat.#:** S222332

**Product Name:** Anti-KIF5A Rabbit Polyclonal Antibody

**Synonyms:** NKHC; ALS25; MY050; NEIMY; SPG10; D12S1889

**UNIPROT ID:** Q12840 (Gene Accession - NP\_004975 )

**Background:** This gene encodes a member of the kinesin family of proteins. Members of this family are part of a multisubunit complex that functions as a microtubule motor in intracellular organelle transport. Mutations in this gene cause autosomal dominant spastic paraplegia 10. [provided by RefSeq, Jul 2008]

**Immunogen:** Synthetic peptide of human KIF5A

**Applications:** ELISA, IHC

**Recommended Dilutions:** IHC: 50-100; ELISA: 500-1000

**Host Species:** Rabbit

**Clonality:** Rabbit Polyclonal

**Isotype:** Immunogen-specific rabbit IgG

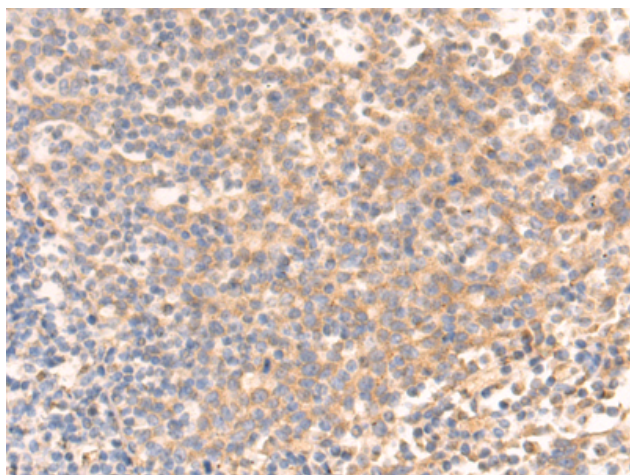
**Purification:** Antigen affinity purification

**Species Reactivity:** Human, Mouse, Rat

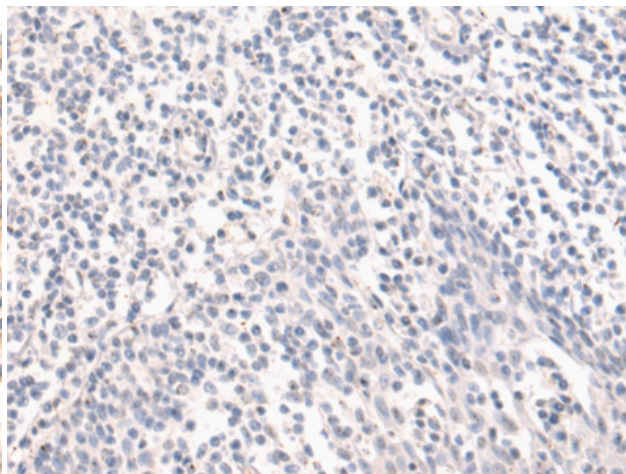
**Constituents:** PBS (without Mg<sup>2+</sup> and Ca<sup>2+</sup>), pH 7.4, 150 mM NaCl, 0.05% Sodium Azide and 40% glycerol

**Research Areas:** Signal Transduction

**Storage & Shipping:** Store at -20°C. Avoid repeated freezing and thawing



Immunohistochemistry analysis of paraffin embedded Human tonsil tissue using 222332(KIF5A Antibody) at a dilution of 1/50(Cytoplasm).



In comparison with the IHC on the left, the same paraffin-embedded Human tonsil tissue is first treated with the synthetic peptide and then with 222332(Anti-KIF5A Antibody) at dilution 1/50.