

KIF4A RABBIT PAB

货号: S220656

产品全名: KIF4A 兔多抗

基因符号: KIF4; KIF4G1

UNIPROT ID: O95239 (Gene Accession - NP_036442)

背景: This gene encodes a member of the kinesin 4 subfamily of kinesin related proteins. The encoded protein is an ATP dependent microtubule-based motor protein that is involved in the intracellular transport of membranous organelles. This protein also associates with condensed chromosome arms and may be involved in maintaining chromosome integrity during mitosis. This protein may also be involved in the organization of the central spindle prior to cytokinesis. A pseudogene of this gene is found on chromosome X.

抗原: Synthetic peptide of human KIF4A

经过测试的应用: ELISA, IHC

推荐稀释比: IHC: 50-200; ELISA: 2000-10000

种属反应性: Rabbit

克隆性: Rabbit Polyclonal

亚型: Immunogen-specific rabbit IgG

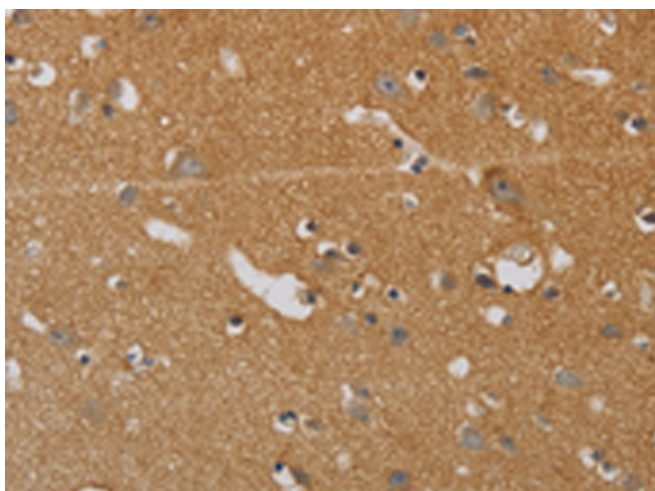
纯化: Antigen affinity purification

种属反应性: Human, Mouse

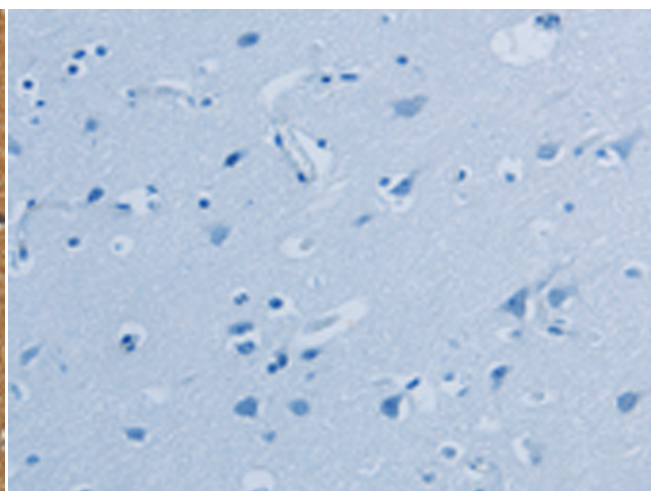
成分: PBS (without Mg²⁺ and Ca²⁺), pH 7.4, 150 mM NaCl, 0.05% Sodium Azide and 40% glycerol

研究领域: Signal Transduction, Epigenetics and Nuclear Signaling, Cancer

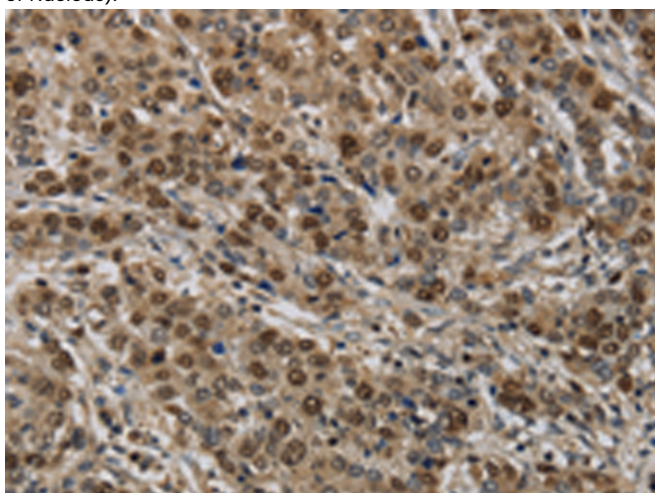
储存和运输: Store at -20°C. Avoid repeated freezing and thawing



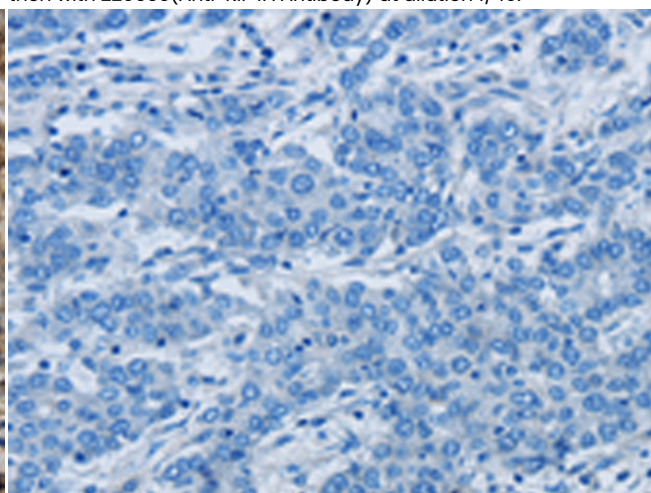
Immunohistochemistry analysis of paraffin embedded Human brain tissue using 220656(KIF4A Antibody) at a dilution of 1/40(Cytoplasm or Nucleus).



In comparison with the IHC on the left, the same paraffin-embedded Human brain tissue is first treated with the synthetic peptide and then with 220656(Anti-KIF4A Antibody) at dilution 1/40.



The image on the left is immunohistochemistry of paraffin-embedded Human liver cancer tissue using 220656(Anti-KIF4A Antibody) at a dilution of 1/40.



In comparison with the IHC on the left, the same paraffin-embedded Human liver cancer tissue is first treated with synthetic peptide and then with D261832(Anti-KIF4A Antibody) at dilution 1/40.



Product Description

Pioneering GTPase and Oncogene Product Development since 2010
