

KIF3A RABBIT PAB

货号: S216604

产品全名: KIF3A 兔多抗

基因符号: FLA10; KLP-20

UNIPROT ID: Q9Y496 (Gene Accession - BC045542)

背景: Kinesin-like protein KIF3A is a protein that in humans is encoded by the KIF3A gene. Members of the heterotrimeric kinesin II family of microtubule associated motors generally contain two different motor subunits from the KIF3 family, which includes KIF3A, B and C. KIF3 isoforms mediate anterograde transport of membrane bound organelles in neurons and melanosomes, transport between the endoplasmic reticulum and the Golgi, and transport of protein complexes within cilia and flagella required for their morphogenesis. KIF3A may influence neurogenesis at the level of embryonic cellular events, where the asymmetry of the genetic control circuit controlling left-right (L-R) axis determination is defined. Loss of KIF3A function in mice photoreceptors causes apoptotic cell death, suggesting that kinesin II mediated transport is required for proper cell fate.

抗原: Fusion protein of human KIF3A

经过测试的应用: ELISA, WB, IHC

推荐稀释比: IHC: 50-200; WB: 500-2000; ELISA: 1000-5000

种属反应性: Rabbit

克隆性: Rabbit Polyclonal

亚型: Immunogen-specific rabbit IgG

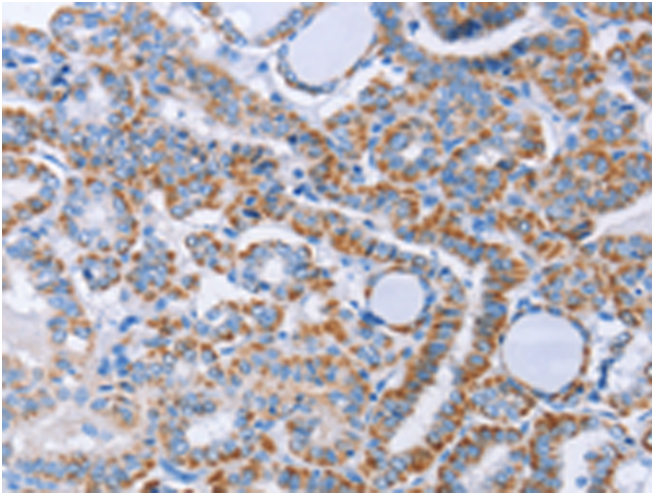
纯化: Antigen affinity purification

种属反应性: Human, Mouse

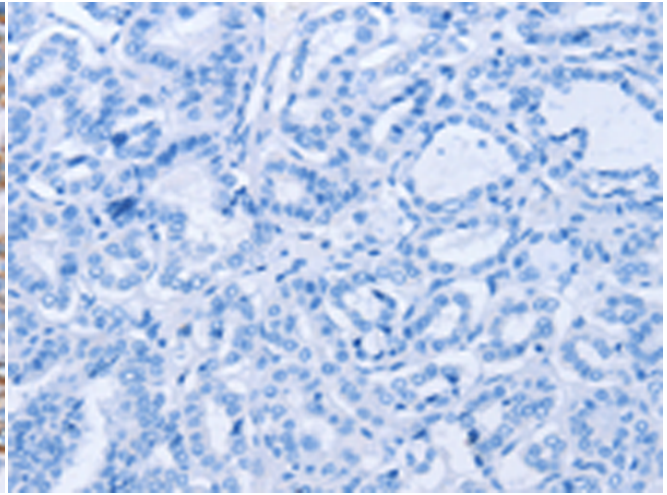
成分: PBS (without Mg²⁺ and Ca²⁺), pH 7.4, 150 mM NaCl, 0.05% Sodium Azide and 40% glycerol

研究领域: Signal Transduction, Neuroscience

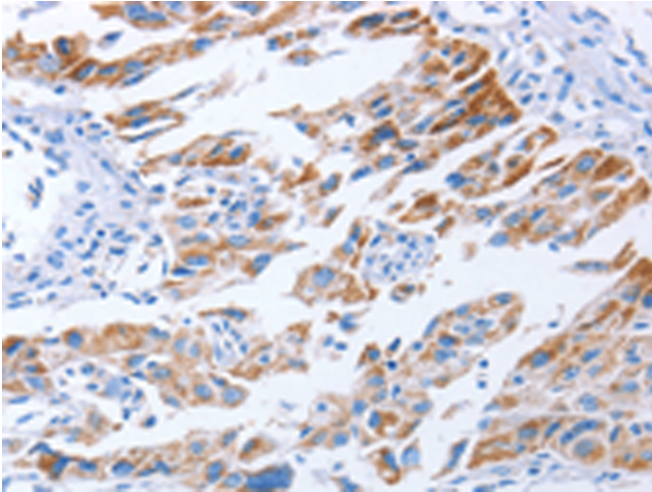
储存和运输: Store at -20°C. Avoid repeated freezing and thawing



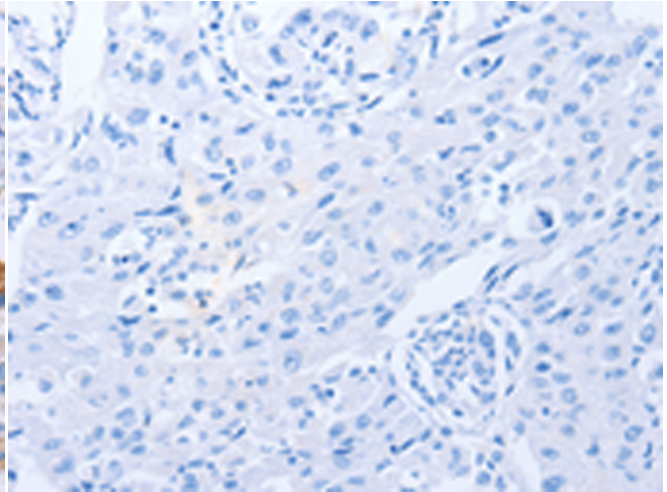
Immunohistochemistry analysis of paraffin embedded Human thyroid cancer tissue using 216604(KIF3A Antibody) at a dilution of 1/40(Cytoplasm).



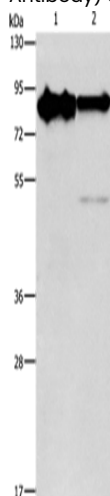
In comparison with the IHC on the left, the same paraffin-embedded Human thyroid cancer tissue is first treated with the fusion protein and then with 216604(Anti-KIF3A Antibody) at dilution 1/40.



The image on the left is immunohistochemistry of paraffin-embedded Human lung cancer tissue using 216604(Anti-KIF3A Antibody) at a dilution of 1/40.



In comparison with the IHC on the left, the same paraffin-embedded Human lung cancer tissue is first treated with fusion protein and then with D220903(Anti-KIF3A Antibody) at dilution 1/40.



Gel: 8%SDS-PAGE, Lysate: 40 µg;
Lane 1-2: Mouse brain tissue, human brain malignant glioma tissue;
Primary antibody: 216604(KIF3A Antibody) at dilution 1/750;
Secondary antibody: Goat anti rabbit IgG at 1/8000 dilution;
Exposure time: 30 seconds



Product Description

Pioneering GTPase and Oncogene Product Development since 2010
