

## KDM5B RABBIT PAB

货号: S214435

产品全名: KDM5B 兔多抗

基因符号 CT31; PLU1; PUT1; PLU-1; JARID1B; RBBP2H1A

**UNIPROT ID:** Q9UGL1 (Gene Accession - NP\_006609 )

**背景:** PLU-1 is a large (1,544 amino acid) nuclear protein that interacts with brain factor-1 (BF-1) and paired box 9 (PAX9), both of which are developmental transcription factors. PLU-1 belongs to the testis-cancer antigen group of proteins and is a member of the ARID family of DNA binding proteins. It is a multi-domain protein with strong transcriptional repression properties. PLU-1 shows restricted expression in adult tissues, with high expression in testis and transient expression in the pregnant mammary gland. Both the PLU-1 gene and the PLU-1 protein product are specifically upregulated in breast cancer. PLU-1 may be important in meiotic transcription because of its apparent association with chromatin.

**抗原:** Synthetic peptide of human KDM5B

**经过测试的应用:** ELISA, IHC

**推荐稀释比:** IHC: 50-200; ELISA: 2000-10000

**种属反应性:** Rabbit

**克隆性:** Rabbit Polyclonal

**亚型:** Immunogen-specific rabbit IgG

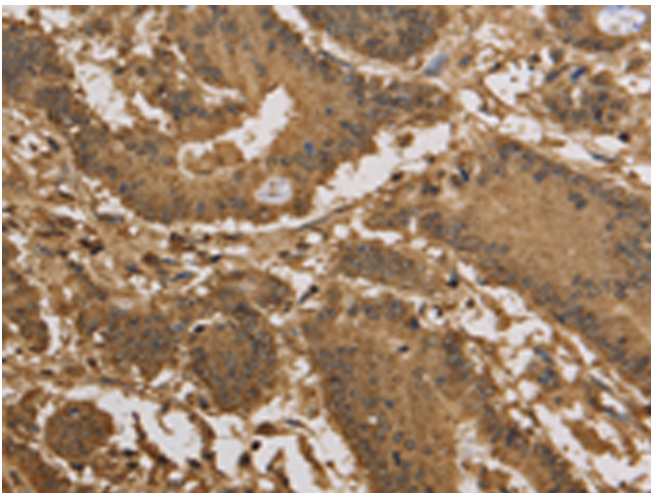
**纯化:** Antigen affinity purification

**种属反应性:** Human, Mouse

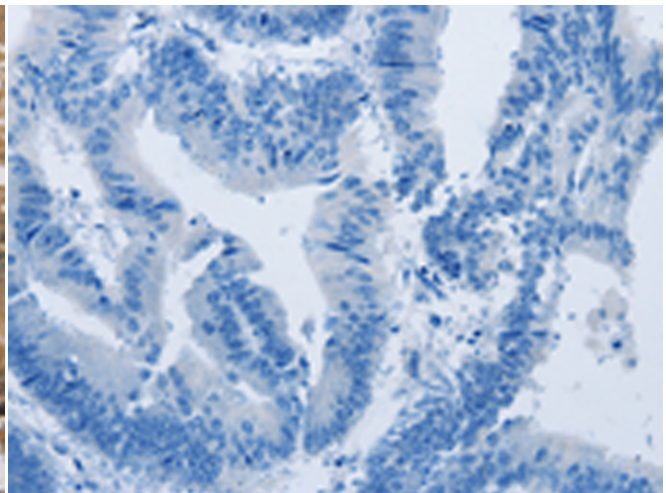
**成分:** PBS (without Mg<sup>2+</sup> and Ca<sup>2+</sup>), pH 7.4, 150 mM NaCl, 0.05% Sodium Azide and 40% glycerol

**研究领域:** Epigenetics and Nuclear Signaling

**储存和运输:** Store at -20°C. Avoid repeated freezing and thawing



Immunohistochemistry analysis of paraffin embedded Human colon cancer tissue using 214435(KDM5B Antibody) at a dilution of 1/40(Nucleus).



In comparison with the IHC on the left, the same paraffin-embedded Human colon cancer tissue is first treated with the synthetic peptide and then with 214435(Anti-KDM5B Antibody) at dilution 1/40.