

## KDM4D RABBIT PAB

货号: S211306

产品全名: KDM4D 兔多抗

基因符号 JMJD2D

**UNIPROT ID:** Q6B0I6 (Gene Accession - BC122858)

**背景:** JMJD2D (Jumonji domain-containing protein 2D), also known as JHDM3D or KDM4D, is a 520 amino acid protein that belongs to the JHDM3 histone demethylase family. Localized to the nucleus, JMJD2D functions as a histone demethylase that removes specific methyl residues from Histone H3, thereby playing a crucial role in the histone code. JMJD2D binds iron as a cofactor and contains one JMJC domain and one JMJD domain, both of which are thought to exhibit enzymatic activity during chromatin remodeling events. In addition, JMJD2D forms a complex with the ligand-bound form of the androgen receptor (AR) and, through this interaction, activates AR expression. Overexpression of AR is associated with prostate cancer, suggesting that, via its ability to upregulate AR, JMJD2D may be involved in carcinogenesis.

**抗原:** Fusion protein of human KDM4D

**经过测试的应用:** ELISA, IHC

**推荐稀释比:** IHC: 25-100; ELISA: 1000-2000

**种属反应性:** Rabbit

**克隆性:** Rabbit Polyclonal

**亚型:** Immunogen-specific rabbit IgG

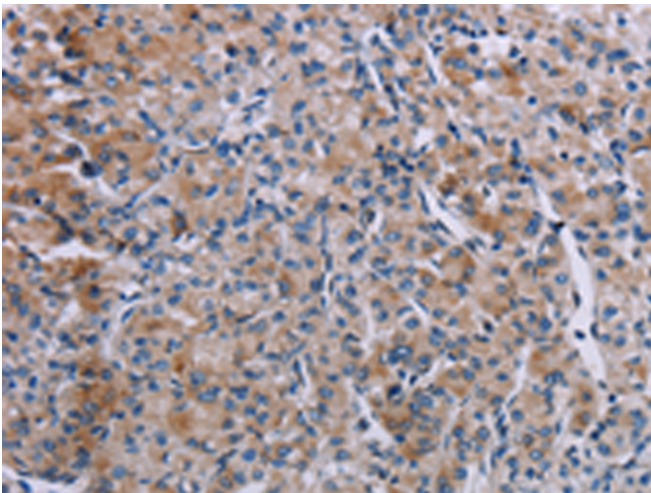
**纯化:** Antigen affinity purification

**种属反应性:** Human, Mouse, Rat

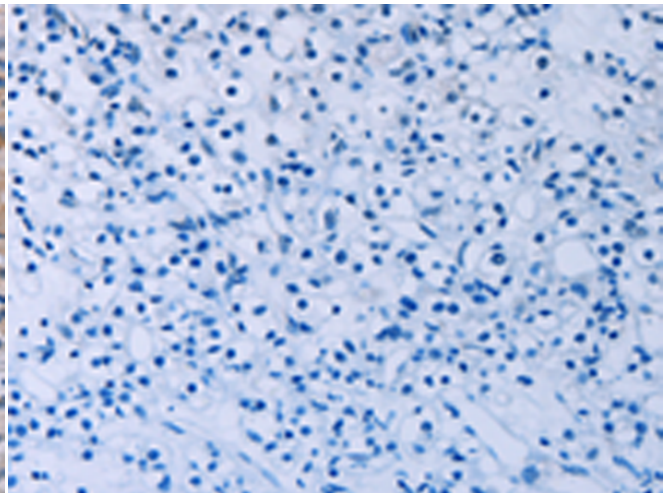
**成分:** PBS (without Mg<sup>2+</sup> and Ca<sup>2+</sup>), pH 7.4, 150 mM NaCl, 0.05% Sodium Azide and 40% glycerol

**研究领域:** Epigenetics and Nuclear Signaling

**储存和运输:** Store at -20°C. Avoid repeated freezing and thawing



Immunohistochemistry analysis of paraffin embedded Human prostate cancer tissue using 211306(KDM4D Antibody) at a dilution of 1/60(Cytoplasm).



In comparison with the IHC on the left, the same paraffin-embedded Human prostate cancer tissue is first treated with the fusion protein and then with 211306(Anti-KDM4D Antibody) at dilution 1/60.