

KDM4A RABBIT MAB

货号: N263630

产品全名: KDM4A 兔单克隆抗体

基因符号 KDM4A; JHDM3A; JMJD2; JMJD2A; KIAA0677; Lysine-specific demethylase 4A; JmjC domain-containing histone demethylation protein 3A; Jumonji domain-containing protein 2A

UNIPROT ID: O75164

背景: Histone demethylase that specifically demethylates 'Lys-9' and 'Lys-36' residues of histone H3, thereby playing a central role in histone code. Does not demethylate histone H3 'Lys-4', H3 'Lys-27' nor H4 'Lys-20'. Demethylates trimethylated H3 'Lys-9' and H3 'Lys-36' residue, while it has no activity on mono- and dimethylated residues.

抗原: A synthesized peptide derived from human KDM4A / JHDM3A / JMJD2A

经过测试的应用: WB,IP

推荐稀释比: WB: 1/500-1/1000 IP: 1/20

种属反应性: Rabbit

克隆性: Rabbit Monoclonal

克隆编号: R01-7F2

分子量: Calculated MW: 121 kDa; Observed MW: 150 kDa

亚型: IgG

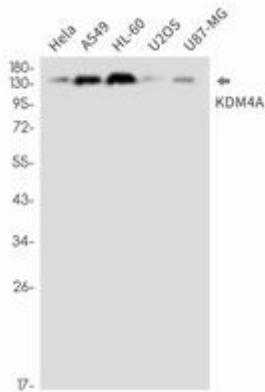
纯化: Affinity Purified

种属反应性: Human

成分: PBS (without Mg²⁺ and Ca²⁺), pH 7.3 containing 50% glycerol, 0.5% BSA and 0.02% sodium azide

研究领域: Epigenetics&Histone methylation

储存和运输: Store at -20°C. Avoid repeated freezing and thawing



Western blot analysis of KDM4A in HeLa, A549, HL-60, U2OS, U87-MG lysates using KDM4A antibody.