

## KDEL RABBIT PAB

货号: N225570

产品全名: KDEL 兔多抗

基因符号 Lys-Asp-Glu-Leu (KDEL)

**UNIPROT ID:** P24390

**背景:** Determines the specificity of the luminal ER protein retention system. Required for the retention of luminal endoplasmic reticulum proteins. Determines the specificity of the luminal ER protein retention system. Also required for normal vesicular traffic through the Golgi. This receptor recognizes K-D-E-L.

**抗原:** A synthesized peptide derived from human KDEL

**经过测试的应用:** WB, IHC-P, ICC/IF, FC

**推荐稀释比:** WB: 1/500-1/1000 IHC: 1/50-1/100 IF: 1/50-1/200 FC: 1/50-1/100

**种属反应性:** Rabbit

**克隆性:** Rabbit Polyclonal

**分子量:** Calculated MW: 25 kDa; Observed MW: 78KD kDa

**亚型:** IgG

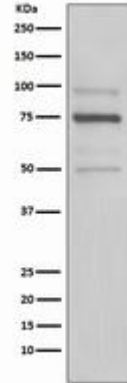
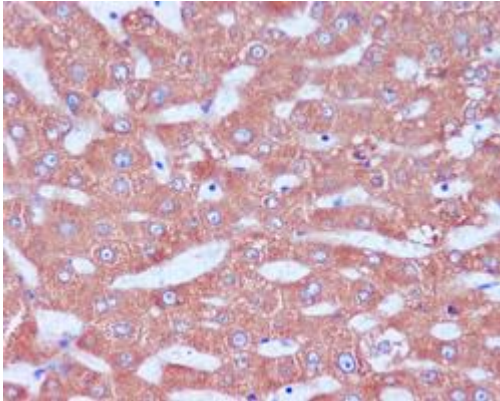
**纯化:** Affinity Chromatography

**种属反应性:** Human, Mouse and Rat

**成分:** PBS (without Mg<sup>2+</sup> and Ca<sup>2+</sup>), pH 7.3 containing 50% glycerol, 0.5% BSA and 0.02% sodium azide

**研究领域:** Tags & Cell Markers

**储存和运输:** Store at -20°C. Avoid repeated freezing and thawing



Immunohistochemistry analysis of paraffin-embedded Human liver using KDEL antibody. High-pressure Sodium Citrate and temperature pH 6.0 was used for antigen retrieval.

Western blot analysis of KDEL in HeLa lysates using KDEL antibody.