

KCTD9 RABBIT MAB

货号: N262443

产品全名: KCTD9 兔单克隆抗体

基因符号 BTB/POZ domain-containing protein KCTD9

UNIPROT ID: Q7L273

背景: Substrate-specific adapter of a BCR (BTB-CUL3-RBX1) E3 ubiquitin-protein ligase complex, which mediates the ubiquitination of target proteins, leading to their degradation by the proteasome.

抗原: A synthetic peptide of human KCTD9

经过测试的应用: WB, ICC/IF

推荐稀释比: WB: 1/500-1/1000 IF: 1/50-1/200

种属反应性: Rabbit

克隆性: Rabbit Monoclonal

克隆编号: R08-5H2

分子量: Calculated MW: 43 kDa; Observed MW: 43 kDa

亚型: IgG

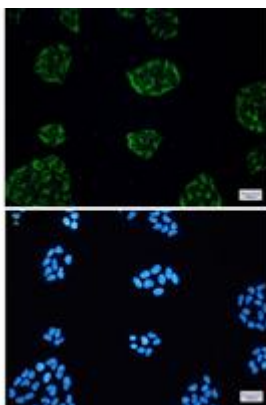
纯化: Affinity Purified

种属反应性: Human

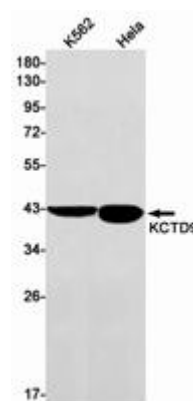
成分: PBS (without Mg²⁺ and Ca²⁺), pH 7.3 containing 50% glycerol, 0.5% BSA and 0.02% sodium azide

研究领域: Neuroscience

储存和运输: Store at -20°C. Avoid repeated freezing and thawing



Immunocytochemistry analysis of KCTD9 (green) in HeLa using KCTD9 antibody, and DAPI (blue)



Western blot analysis of KCTD9 in K562, HeLa lysates using KCTD9 antibody.



Product Description

Pioneering GTPase and Oncogene Product Development since 2010
