

KCNA1 RABBIT PAB

货号: S219877

产品全名: KCNA1 兔多抗

基因符号: EA1, MK1, AEMK, HBK1, HUK1, MBK1, RBK1, KV1.1

UNIPROT ID: Q09470 (Gene Accession - NP_000208)

背景: This gene encodes a voltage-gated delayed potassium channel that is phylogenetically related to the Drosophila Shaker channel. The encoded protein has six putative transmembrane segments (S1-S6), and the loop between S5 and S6 forms the pore and contains the conserved selectivity filter motif (GYGD). The functional channel is a homotetramer. The N-terminus of the channel is associated with beta subunits that can modify the inactivation properties of the channel as well as affect expression levels. The C-terminus of the channel is complexed to a PDZ domain protein that is responsible for channel targeting. Mutations in this gene have been associated with myokymia with periodic ataxia (AEMK).

抗原: Synthetic peptide of human KCNA1

经过测试的应用: ELISA, WB, IHC

推荐稀释比: IHC: 15-50;WB: 500-2000;ELISA: 1000-5000

种属反应性: Rabbit

克隆性: Rabbit Polyclonal

亚型: Immunogen-specific rabbit IgG

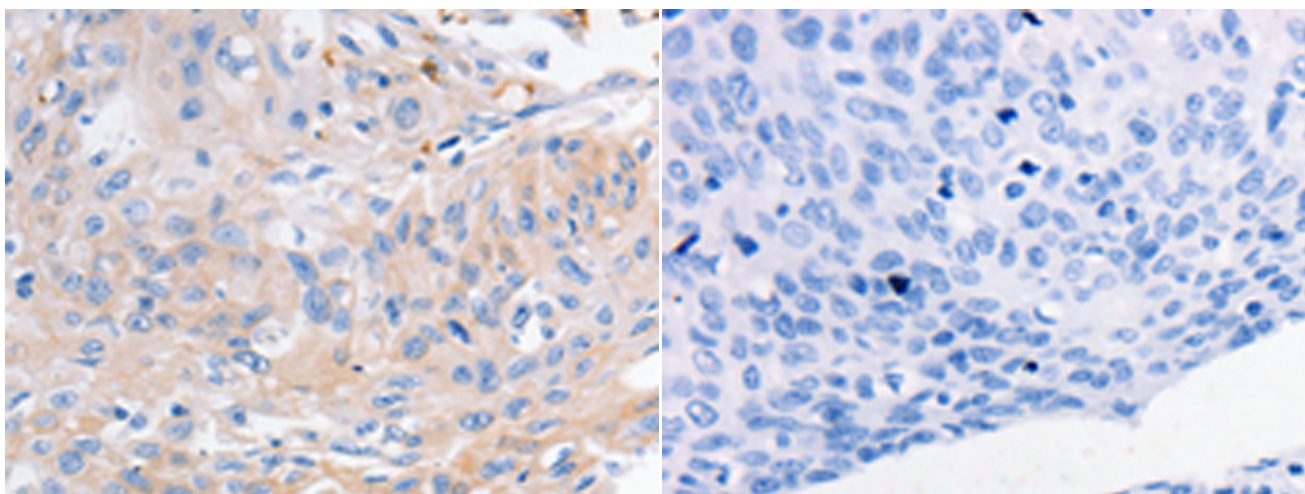
纯化: Antigen affinity purification

种属反应性: Human, Mouse, Rat

成分: PBS (without Mg²⁺ and Ca²⁺), pH 7.4, 150 mM NaCl, 0.05% Sodium Azide and 40% glycerol

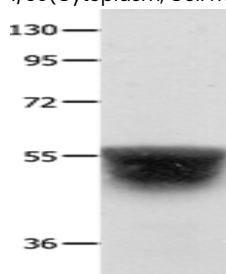
研究领域: Neuroscience

储存和运输: Store at -20°C. Avoid repeated freezing and thawing



Immunohistochemistry analysis of paraffin embedded Human cervical cancer tissue using 219877(KCNA1 Antibody) at a dilution of 1/30(Cytoplasm, Cell membrane).

In comparison with the IHC on the left, the same paraffin-embedded Human cervical cancer tissue is first treated with the synthetic peptide and then with 219877(Anti-KCNA1 Antibody) at dilution 1/30.



Gel: 8%SDS-PAGE, Lysate: 40 µg;

Lane: Human brain malignant glioma tissue;

Primary antibody: 219877(KCNA1 Antibody) at dilution 1/400;

Secondary antibody: Goat anti rabbit IgG at 1/8000 dilution;

Exposure time: 20 seconds