

## KAZN RABBIT PAB

货号: S218111

产品全名: KAZN 兔多抗

基因符号: KAZ

**UNIPROT ID:** Q674X7 (Gene Accession - BC113621)

**背景:** This gene encodes a protein that plays a role in desmosome assembly, cell adhesion, cytoskeletal organization, and epidermal differentiation. This protein co-localizes with desmoplakin and the cytolinker protein periplakin. In general, this protein localizes to the nucleus, desmosomes, cell membrane, and cortical actin-based structures. Some isoforms of this protein also associate with microtubules. Alternative splicing results in multiple transcript variants encoding distinct isoforms. Additional splice variants have been described but their biological validity has not been verified.

**抗原:** Fusion protein of human KAZN

**经过测试的应用:** ELISA, IHC

**推荐稀释比:** IHC: 25-100; ELISA: 5000-10000

**种属反应性:** Rabbit

**克隆性:** Rabbit Polyclonal

**亚型:** Immunogen-specific rabbit IgG

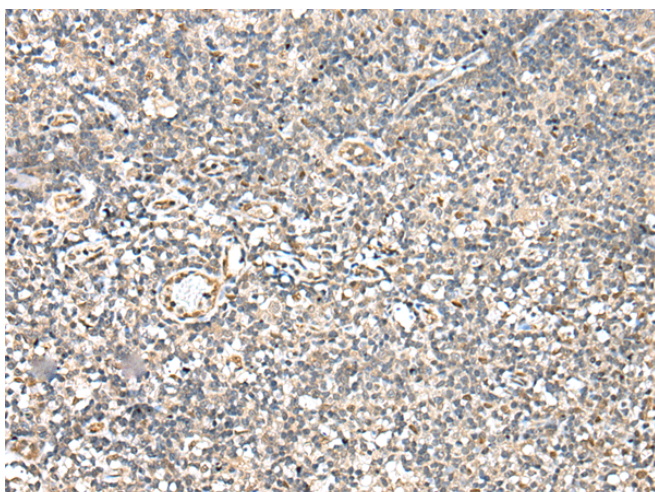
**纯化:** Antigen affinity purification

**种属反应性:** Human, Mouse, Rat

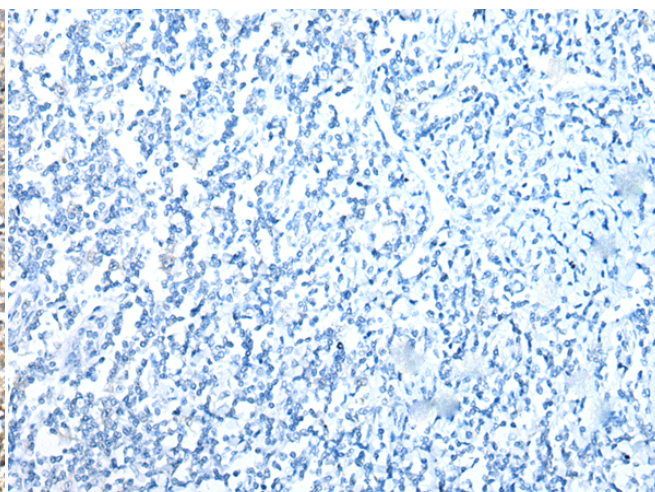
**成分:** PBS (without Mg<sup>2+</sup> and Ca<sup>2+</sup>), pH 7.4, 150 mM NaCl, 0.05% Sodium Azide and 40% glycerol

**研究领域:** Signal Transduction, Cancer

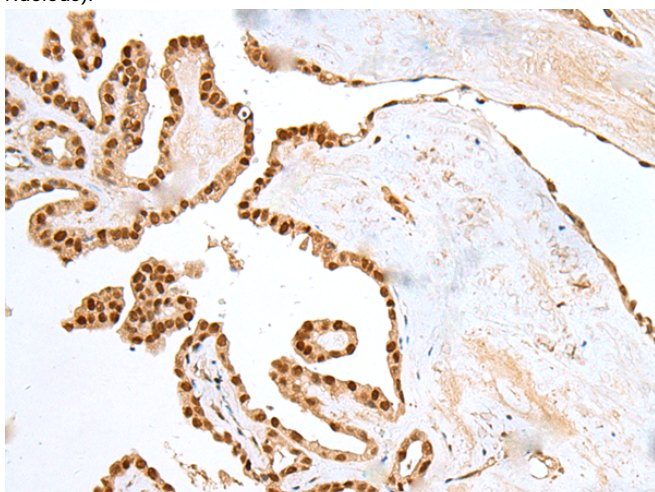
**储存和运输:** Store at -20°C. Avoid repeated freezing and thawing



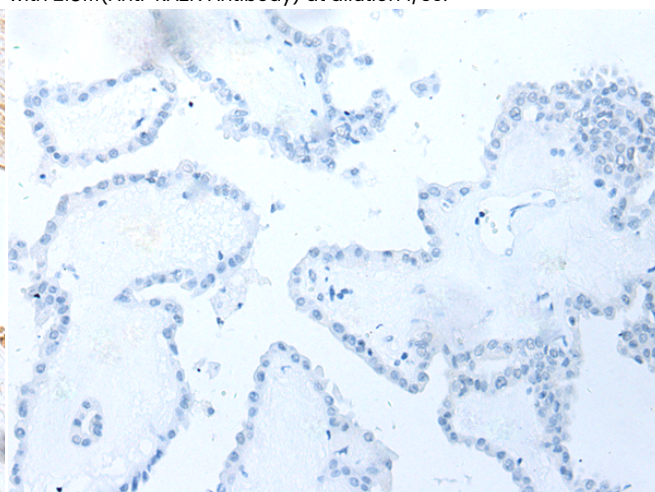
Immunohistochemistry analysis of paraffin embedded Human tonsil tissue using 218111(KAZN Antibody) at a dilution of 1/30(Cytoplasm or Nucleus).



In comparison with the IHC on the left, the same paraffin-embedded Human tonsil tissue is first treated with the fusion protein and then with 218111(Anti-KAZN Antibody) at dilution 1/30.



The image on the left is immunohistochemistry of paraffin-embedded Human thyroid cancer tissue using 218111(Anti-KAZN Antibody) at a dilution of 1/30.



In comparison with the IHC on the left, the same paraffin-embedded Human thyroid cancer tissue is first treated with fusion protein and then with D223740(Anti-KAZN Antibody) at dilution 1/30.



# Product Description

Pioneering GTPase and Oncogene Product Development since 2010

---