

## KAT1 RABBIT MAB

货号: N262440

产品全名: KAT1 兔单克隆抗体

基因符号 hat1; KAT1

**UNIPROT ID:** O14929

背景: Acetylates soluble but not nucleosomal histone H4 at 'Lys-5' (H4K5ac) and 'Lys-12' (H4K12ac) and, to a lesser extent, acetylates histone H2A at 'Lys-5' (H2AK5ac). Has intrinsic substrate specificity that modifies lysine in recognition sequence GXGKXG.

抗原: Recombinant protein of human KAT1

经过测试的应用: WB,IHC-F,IHC-P,ICC/IF,IP

推荐稀释比: WB: 1/500-1/1000 IHC: 1/50-1/100 IF: 1/50-1/200 IP: 1/20

种属反应性: Rabbit

克隆性: Rabbit Monoclonal

克隆编号: R02-4J1

分子量: Calculated MW: 50 kDa; Observed MW: 45 kDa

亚型: IgG

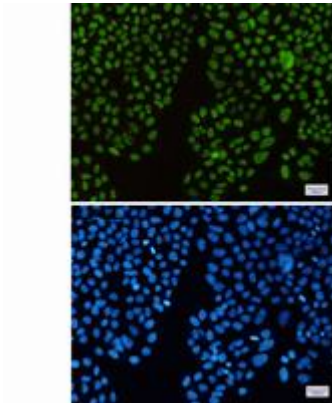
纯化: Affinity Purified

种属反应性: Human, Mouse and Rat

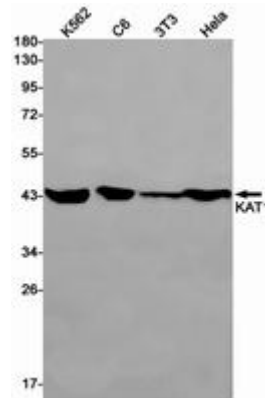
成分: PBS (without Mg<sup>2+</sup> and Ca<sup>2+</sup>), pH 7.3 containing 50% glycerol, 0.5% BSA and 0.02% sodium azide

研究领域: Epigenetics and Nuclear Signaling

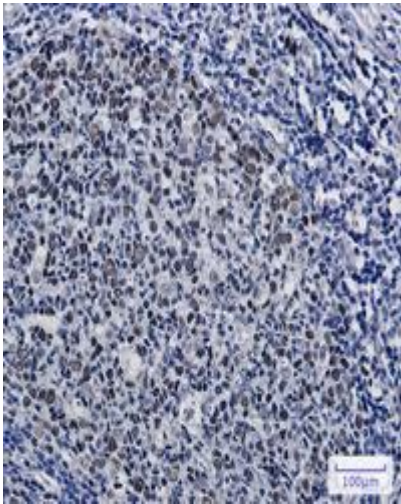
储存和运输: Store at -20°C. Avoid repeated freezing and thawing



Immunocytochemistry analysis of KAT1 (green) in Hela using KAT1 antibody, and DAPI (blue)



Western blot analysis of KAT1 in K562, C6, 3T3, Hela lysates using KAT1 antibody.



Immunohistochemistry analysis of paraffin-embedded Human tonsil using KAT1/HAT1 antibody. High-pressure and temperature Sodium Citrate pH 6.0 was used for antigen retrieval.