

KANSL1L RABBIT PAB

货号: S222272

产品全名: KANSL1L 兔多抗

基因符号: MSL1v2; C2orf67

UNIPROT ID: A0AUZ9 (Gene Accession - NP_689732)

背景: The function of this protein remains unknown.

抗原: Synthetic peptide of human KANSL1L

经过测试的应用: ELISA, IHC

推荐稀释比: IHC: 25-100; ELISA: 5000-10000

种属反应性: Rabbit

克隆性: Rabbit Polyclonal

亚型: Immunogen-specific rabbit IgG

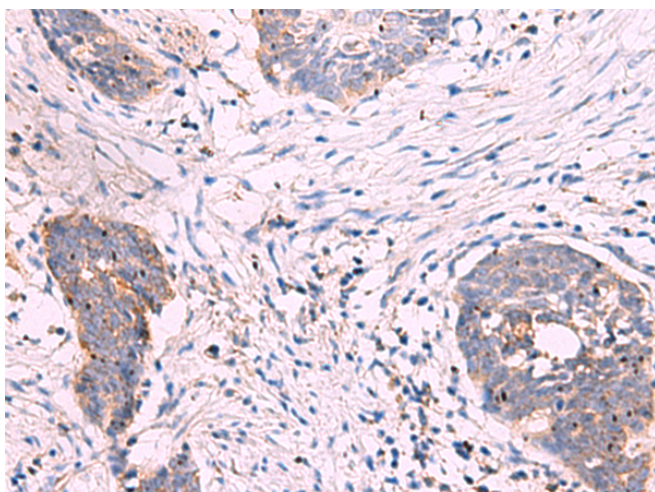
纯化: Antigen affinity purification

种属反应性: Human

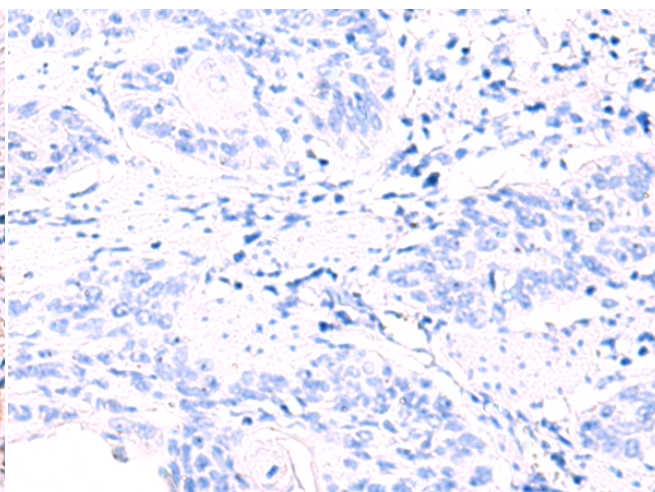
成分: PBS (without Mg²⁺ and Ca²⁺), pH 7.4, 150 mM NaCl, 0.05% Sodium Azide and 40% glycerol

研究领域: Epigenetics and Nuclear Signaling

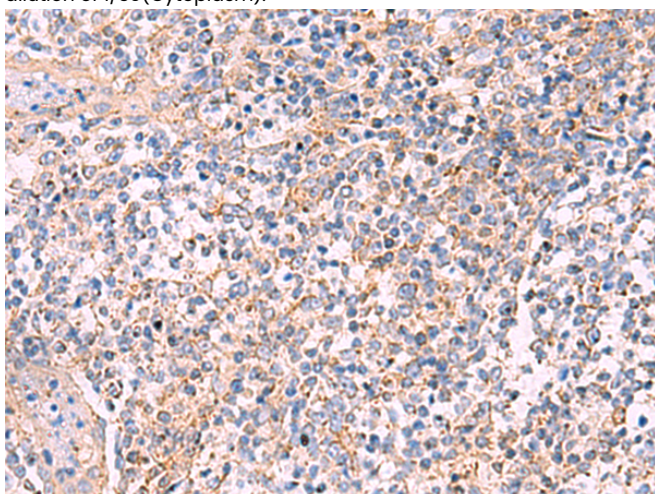
储存和运输: Store at -20°C. Avoid repeated freezing and thawing



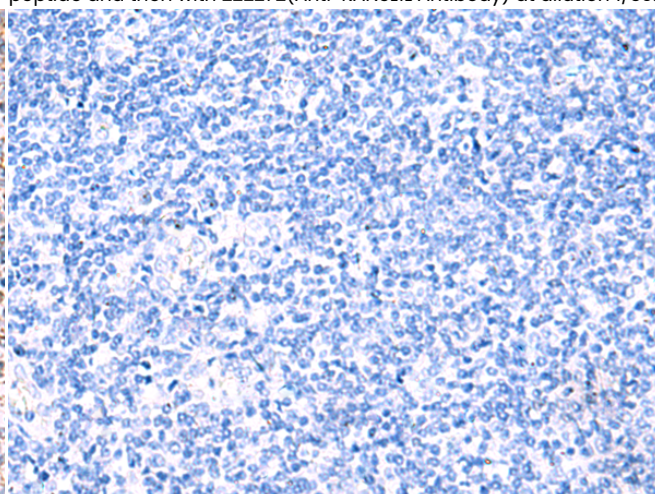
Immunohistochemistry analysis of paraffin embedded Human esophagus cancer tissue using 222272(KANSL1L Antibody) at a dilution of 1/30(Cytoplasm).



In comparison with the IHC on the left, the same paraffin-embedded Human esophagus cancer tissue is first treated with the synthetic peptide and then with 222272(Anti-KANSL1L Antibody) at dilution 1/30.



The image on the left is immunohistochemistry of paraffin-embedded Human tonsil tissue using 222272(Anti-KANSL1L Antibody) at a dilution of 1/30.



In comparison with the IHC on the left, the same paraffin-embedded Human tonsil tissue is first treated with synthetic peptide and then with D264312(Anti-KANSL1L Antibody) at dilution 1/30.



Product Description

Pioneering GTPase and Oncogene Product Development since 2010
