

JUNCTIONAL ADHESION MOLECULE 1 RABBIT MAB

货号: N262435

产品全名: Junctional Adhesion Molecule 1 兔单克隆抗体

基因符号 F11R; JAM1; JCAM; Junctional adhesion molecule A; JAM-A; Junctional adhesion molecule 1; JAM-1; Platelet F11 receptor; Platelet adhesion molecule 1; PAM-1; CD321

UNIPROT ID: Q9Y624

背景: Seems to play a role in epithelial tight junction formation. Appears early in primordial forms of cell junctions and recruits PARD3. The association of the PARD6-PARD3 complex may prevent the interaction of PARD3 with JAM1, thereby preventing tight junction assembly (By similarity). Plays a role in regulating monocyte transmigration involved in integrity of epithelial barrier. Involved in platelet activation. In case of orthoreovirus infection, serves as receptor for the virus.

抗原: A synthetic peptide of human Junctional Adhesion Molecule 1

经过测试的应用: WB, IHC-P

推荐稀释比: WB: 1/500-1/1000 IHC: 1/50-1/100

种属反应性: Rabbit

克隆性: Rabbit Monoclonal

克隆编号: R04-7E5

分子量: Calculated MW: 33 kDa; Observed MW: 33 kDa

亚型: IgG

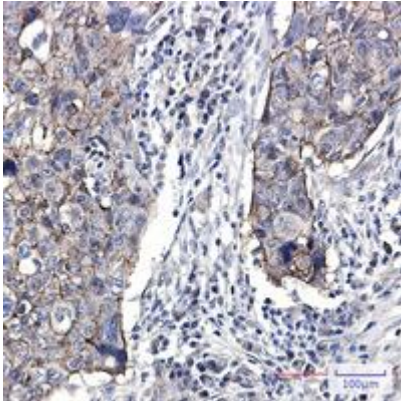
纯化: Affinity Purified

种属反应性: Human

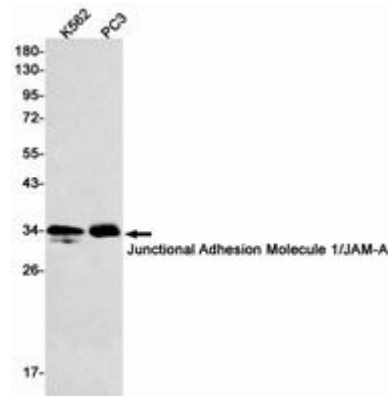
成分: PBS (without Mg²⁺ and Ca²⁺), pH 7.3 containing 50% glycerol, 0.5% BSA and 0.02% sodium azide

研究领域: Cardiovascular

储存和运输: Store at -20°C. Avoid repeated freezing and thawing



Immunohistochemistry analysis of paraffin-embedded Human lung cancer using Junctional Adhesion Molecule 1 antibody. High-pressure and temperature Sodium Citrate pH 6.0 was used for antigen retrieval.



Western blot analysis of Junctional Adhesion Molecule 1/JAMA in K562, PC-3 lysates using Junctional Adhesion Molecule 1 antibody.