

JAK2 RABBIT PAB

货号: S219873

产品全名: JAK2 兔多抗

基因符号: JTK10, THCYT3

UNIPROT ID: O60674 (Gene Accession - NP_004963)

背景: This gene product is a protein tyrosine kinase involved in a specific subset of cytokine receptor signaling pathways. It has been found to be constitutively associated with the prolactin receptor and is required for responses to gamma interferon. Mice that do not express an active protein for this gene exhibit embryonic lethality associated with the absence of definitive erythropoiesis.

抗原: Synthetic peptide of human JAK2

经过测试的应用: ELISA, IHC

推荐稀释比: IHC: Oct-50; ELISA: 1000-2000

种属反应性: Rabbit

克隆性: Rabbit Polyclonal

亚型: Immunogen-specific rabbit IgG

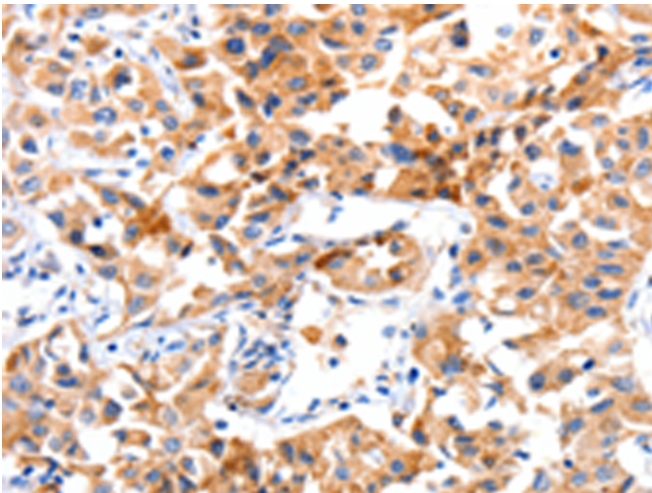
纯化: Antigen affinity purification

种属反应性: Human, Rat

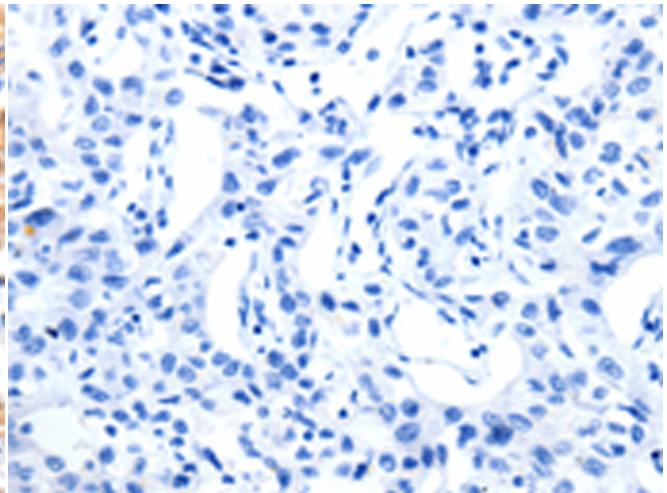
成分: PBS (without Mg²⁺ and Ca²⁺), pH 7.4, 150 mM NaCl, 0.05% Sodium Azide and 40% glycerol

研究领域: Signal Transduction, Epigenetics and Nuclear Signaling, Cancer

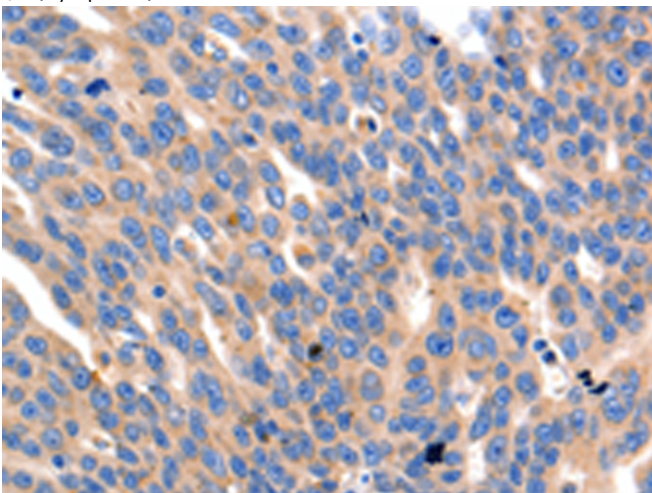
储存和运输: Store at -20°C. Avoid repeated freezing and thawing



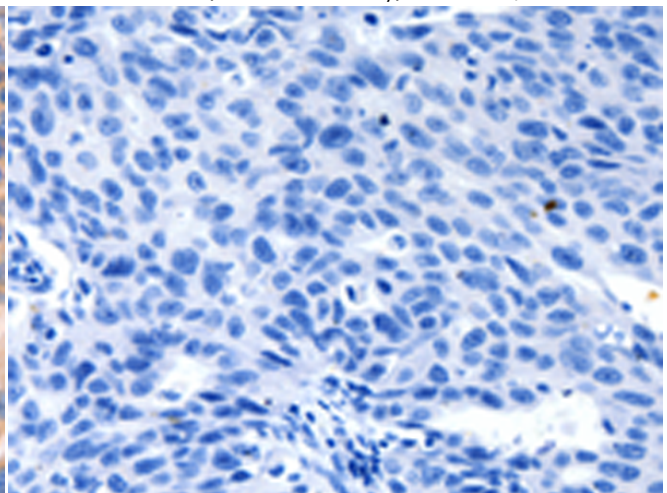
Immunohistochemistry analysis of paraffin embedded Human lung cancer tissue using 219873(JAK2 Antibody) at a dilution of 1/10(Cytoplasm).



In comparison with the IHC on the left, the same paraffin-embedded Human lung cancer tissue is first treated with the synthetic peptide and then with 219873(Anti-JAK2 Antibody) at dilution 1/10.



The image on the left is immunohistochemistry of paraffin-embedded Human ovarian cancer tissue using 219873(Anti-JAK2 Antibody) at a dilution of 1/10.



In comparison with the IHC on the left, the same paraffin-embedded Human ovarian cancer tissue is first treated with synthetic peptide and then with D260525(Anti-JAK2 Antibody) at dilution 1/10.



Product Description

Pioneering GTPase and Oncogene Product Development since 2010
