

IZUMO1R RABBIT PAB

货号: S222045

产品全名: IZUMO1R 兔多抗

基因符号 JUNO; FOLR4; Folbp3

UNIPROT ID: A6ND01 (Gene Accession - NP_001186135)

背景: Receptor for IZUMO1 present at the cell surface of oocytes (olemma), which is essential for species-specific gamete recognition and fertilization. The IZUMO1:IZUMO1R/JUNO interaction is a necessary adhesion event between sperm and egg that is required for fertilization but is not sufficient for cell fusion. The ligand-receptor interaction probably does not act as a membrane 'fusogen'. Does not bind folate.

抗原: Synthetic peptide of human IZUMO1R

经过测试的应用: ELISA, IHC

推荐稀释比: IHC: 25-100; ELISA: 5000-10000

种属反应性: Rabbit

克隆性: Rabbit Polyclonal

亚型: Immunogen-specific rabbit IgG

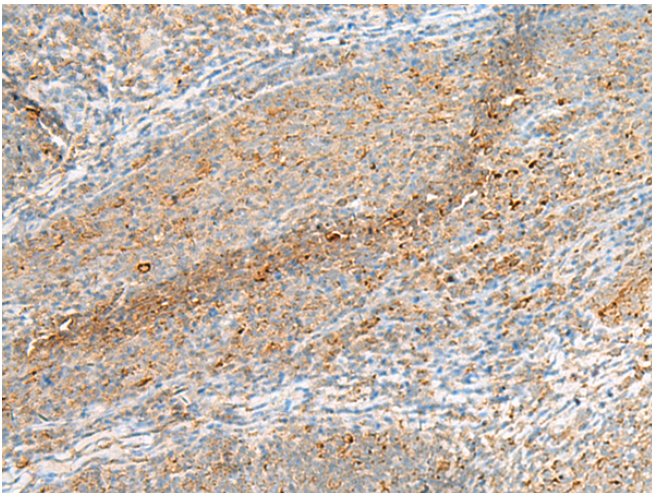
纯化: Antigen affinity purification

种属反应性: Human

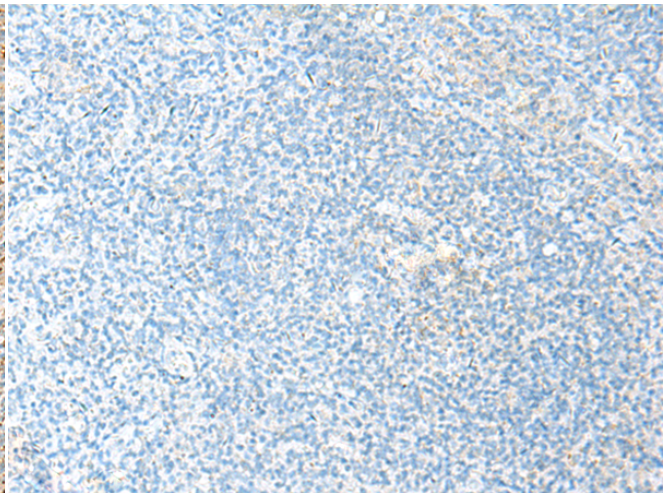
成分: PBS (without Mg²⁺ and Ca²⁺), pH 7.4, 150 mM NaCl, 0.05% Sodium Azide and 40% glycerol

研究领域: Signal Transduction

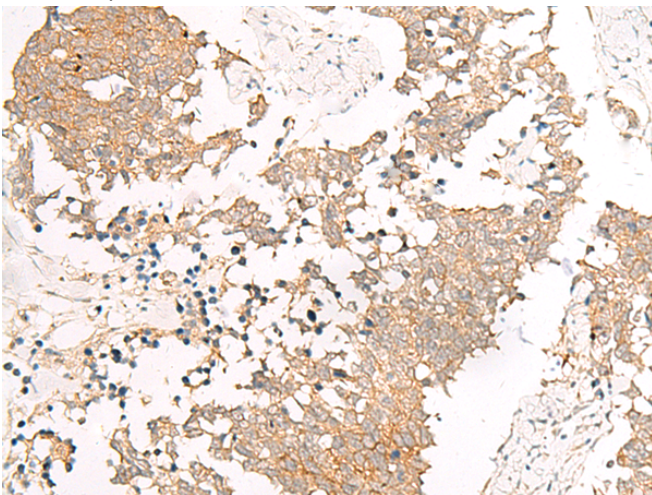
储存和运输: Store at -20°C. Avoid repeated freezing and thawing



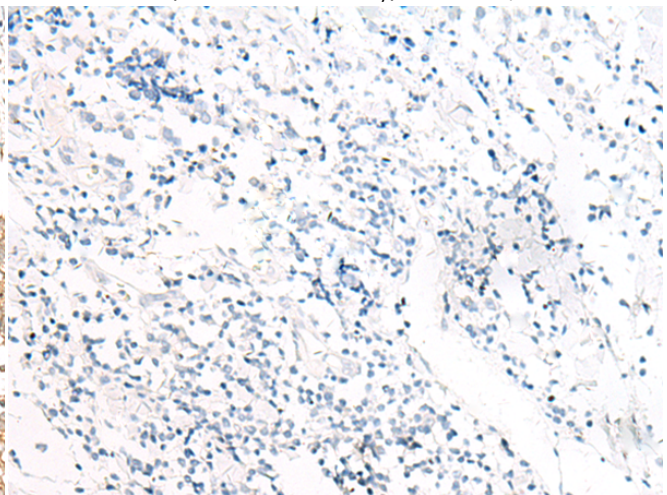
Immunohistochemistry analysis of paraffin embedded Human tonsil tissue using 222045 (IZUMO1R Antibody) at a dilution of 1/40 (Cell membrane).



In comparison with the IHC on the left, the same paraffin-embedded Human tonsil tissue is first treated with the synthetic peptide and then with 222045 (Anti-IZUMO1R Antibody) at dilution 1/40.



The image on the left is immunohistochemistry of paraffin-embedded Human lung cancer tissue using 222045 (Anti-IZUMO1R Antibody) at a dilution of 1/40.



In comparison with the IHC on the left, the same paraffin-embedded Human lung cancer tissue is first treated with synthetic peptide and then with D263930 (Anti-IZUMO1R Antibody) at dilution 1/40.



Product Description

Pioneering GTPase and Oncogene Product Development since 2010
