

ITPK1 RABBIT MAB

货号: N262428

产品全名: ITPK1 兔单克隆抗体

基因符号 ITRPK1

UNIPROT ID: Q13572

背景: Kinase that can phosphorylate various inositol polyphosphate such as Ins(3,4,5,6)P4 or Ins(1,3,4)P3. Phosphorylates Ins(3,4,5,6)P4 at position 1 to form Ins(1,3,4,5,6)P5. This reaction is thought to have regulatory importance, since Ins(3,4,5,6)P4 is an inhibitor of plasma membrane Ca²⁺-activated Cl⁻ channels, while Ins(1,3,4,5,6)P5 is not. Also phosphorylates Ins(1,3,4)P3 on O-5 and O-6 to form Ins(1,3,4,6)P4, an essential molecule in the hexakisphosphate (InsP6) pathway. Also acts as an inositol polyphosphate phosphatase that dephosphorylate Ins(1,3,4,5)P4 and Ins(1,3,4,6)P4 to Ins(1,3,4)P3, and Ins(1,3,4,5,6)P5 to Ins(3,4,5,6)P4. May also act as an isomerase that interconverts the inositol tetrakisphosphate isomers Ins(1,3,4,5)P4 and Ins(1,3,4,6)P4 in the presence of ADP and magnesium. Probably acts as the rate-limiting enzyme of the InsP6 pathway. Modifies TNF- α -induced apoptosis by interfering with the activation of TNFRSF1A-associated death domain.

抗原: A synthetic peptide of human ITPK1

经过测试的应用: WB,IP

推荐稀释比: WB: 1/500-1/1000 IP: 1/20

种属反应性: Rabbit

克隆性: Rabbit Monoclonal

克隆编号: R01-7C2

分子量: Calculated MW: 46 kDa; Observed MW: 46 kDa

亚型: IgG

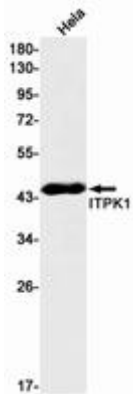
纯化: Affinity Purified

种属反应性: Human

成分: PBS (without Mg²⁺ and Ca²⁺), pH 7.3 containing 50% glycerol, 0.5% BSA and 0.02% sodium azide

研究领域: Signal Transduction

储存和运输: Store at -20°C. Avoid repeated freezing and thawing



Western blot analysis of ITPK1 in HeLa lysates using ITPK1 antibody.