

ITM2C RABBIT PAB

货号: S219274

产品全名: ITM2C 兔多抗

基因符号: E25; BRI3; E25C; ITM3; BRICD2C

UNIPROT ID: Q9NQX7 (Gene Accession - BC025742)

背景: Negative regulator of amyloid-beta peptide production. May inhibit the processing of APP by blocking its access to alpha- and beta-secretase. Binding to the beta-secretase-cleaved APP C-terminal fragment is negligible, suggesting that ITM2C is a poor gamma-secretase cleavage inhibitor. May play a role in TNF-induced cell death and neuronal differentiation (By similarity).

抗原: Fusion protein of human ITM2C

经过测试的应用: ELISA, IHC

推荐稀释比: IHC: 100-200; ELISA: 5000-10000

种属反应性: Rabbit

克隆性: Rabbit Polyclonal

亚型: Immunogen-specific rabbit IgG

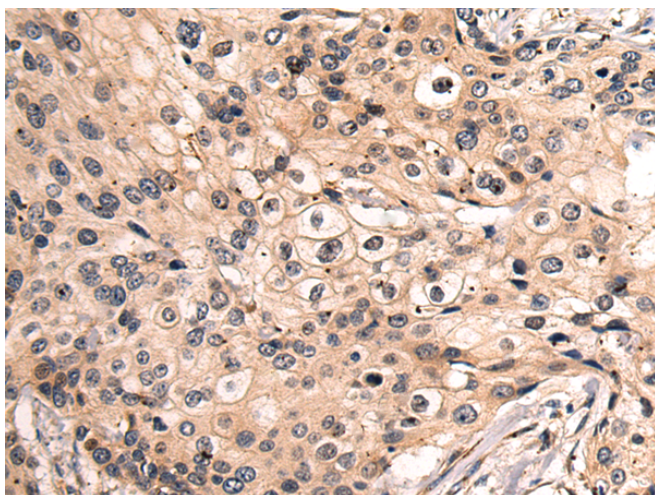
纯化: Antigen affinity purification

种属反应性: Human

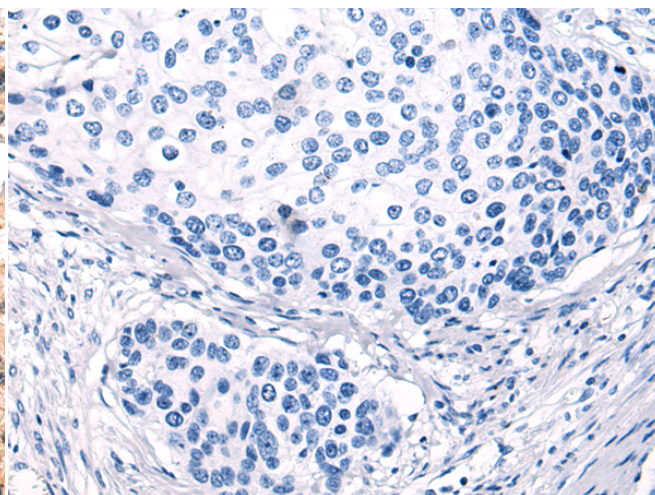
成分: PBS (without Mg²⁺ and Ca²⁺), pH 7.4, 150 mM NaCl, 0.05% Sodium Azide and 40% glycerol

研究领域: Neuroscience

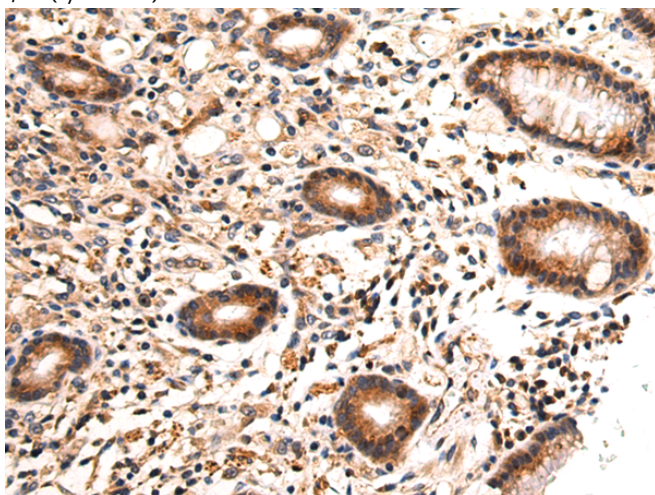
储存和运输: Store at -20°C. Avoid repeated freezing and thawing



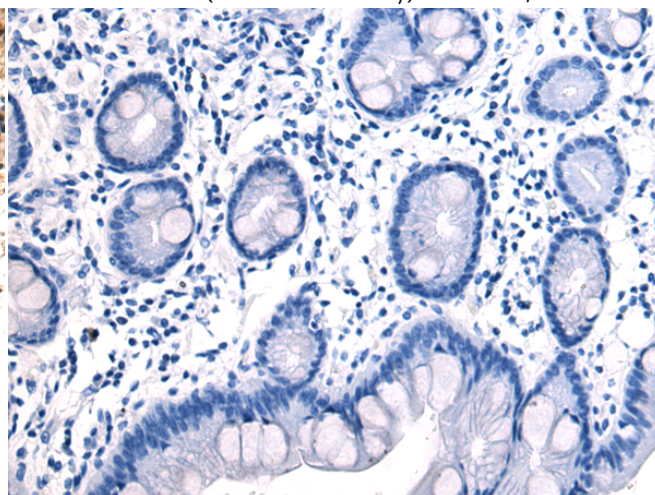
Immunohistochemistry analysis of paraffin embedded Human cervical cancer tissue using 219274 (ITM2C Antibody) at a dilution of 1/120 (Lysosome).



In comparison with the IHC on the left, the same paraffin-embedded Human cervical cancer tissue is first treated with the fusion protein and then with 219274 (Anti-ITM2C Antibody) at dilution 1/120.



The image on the left is immunohistochemistry of paraffin-embedded Human gastric cancer tissue using 219274 (Anti-ITM2C Antibody) at a dilution of 1/120.



In comparison with the IHC on the left, the same paraffin-embedded Human gastric cancer tissue is first treated with fusion protein and then with D226178 (Anti-ITM2C Antibody) at dilution 1/120.



Product Description

Pioneering GTPase and Oncogene Product Development since 2010
