

## ITLN2 RABBIT PAB

货号: S218109

产品全名: ITLN2 兔多抗

基因符号: HL2; HL-2

**UNIPROT ID:** Q8WWU7 (Gene Accession - BC117225)

背景: Predicted to enable oligosaccharide binding activity. Predicted to be active in extracellular space.

抗原: Fusion protein of human ITLN2

经过测试的应用: ELISA, WB, IHC

推荐稀释比: IHC: 150-300;WB: 500-2000;ELISA: 5000-10000

种属反应性: Rabbit

克隆性: Rabbit Polyclonal

亚型: Immunogen-specific rabbit IgG

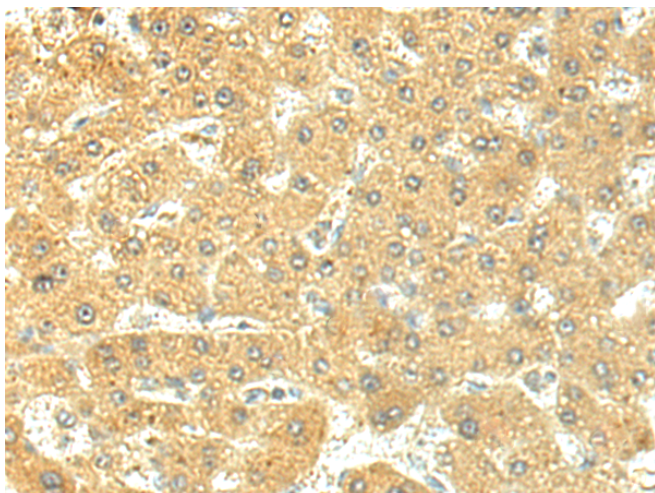
纯化: Antigen affinity purification

种属反应性: Human, Mouse

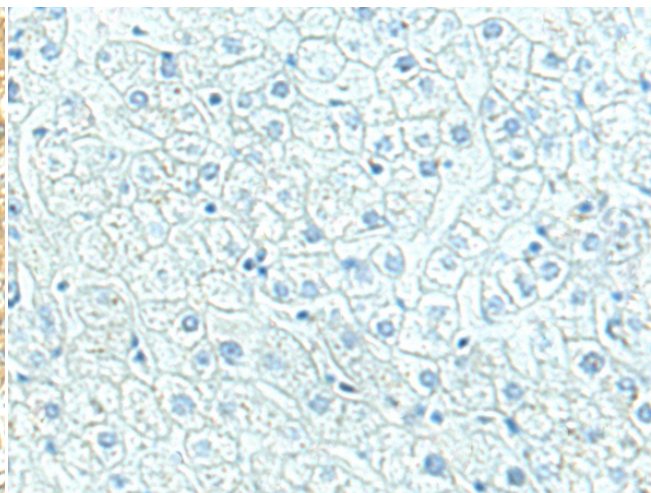
成分: PBS (without Mg<sup>2+</sup> and Ca<sup>2+</sup>), pH 7.4, 150 mM NaCl, 0.05% Sodium Azide and 40% glycerol

研究领域: Metabolism, Cardiovascular

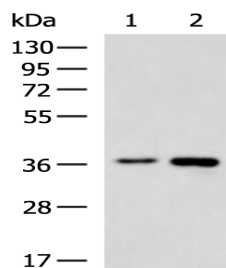
储存和运输: Store at -20°C. Avoid repeated freezing and thawing



Immunohistochemistry analysis of paraffin embedded Human liver cancer tissue using 218109 (ITLN2 Antibody) at a dilution of 1/120 (Secreted).



In comparison with the IHC on the left, the same paraffin-embedded Human liver cancer tissue is first treated with the fusion protein and then with 218109 (Anti-ITLN2 Antibody) at dilution 1/120.



Gel: 8%SDS-PAGE, Lysate: 40 µg;

Lane 1-2: Human rectum tissue, Human ileum tissue lysates;

Primary antibody: 218109 (ITLN2 Antibody) at dilution 1/550;

Secondary antibody: HRP-conjugated Goat anti rabbit IgG at 1/5000 dilution;

Exposure time: 1 minute