

ITGB6 RABBIT PAB

货号: S216587

产品全名: ITGB6 兔多抗

基因符号: AIIH

UNIPROT ID: P18564 (Gene Accession - BC121178)

背景: This gene encodes a protein that is a member of the integrin superfamily. Members of this family are adhesion receptors that function in signaling from the extracellular matrix to the cell. Integrins are heterodimeric integral membrane proteins composed of an alpha chain and a beta chain. The encoded protein forms a dimer with an alpha v chain and this heterodimer can bind to ligands like fibronectin and transforming growth factor beta 1. Alternate splicing results in multiple transcript variants.

抗原: Fusion protein of human ITGB6

经过测试的应用: ELISA, IHC

推荐稀释比: IHC: 50-200; ELISA: 5000-10000

种属反应性: Rabbit

克隆性: Rabbit Polyclonal

亚型: Immunogen-specific rabbit IgG

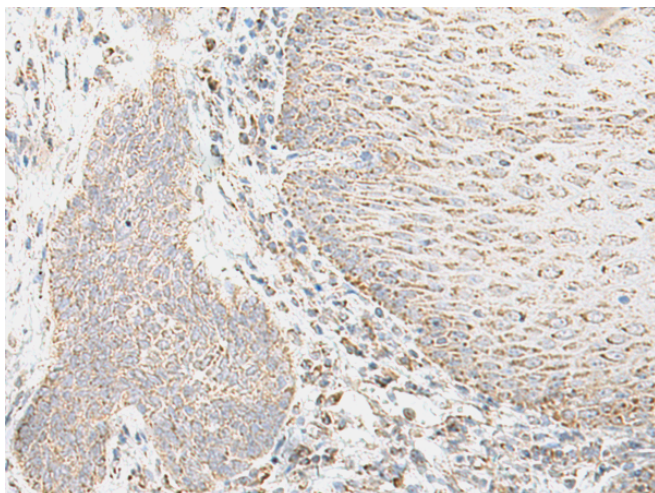
纯化: Antigen affinity purification

种属反应性: Human, Mouse, Rat

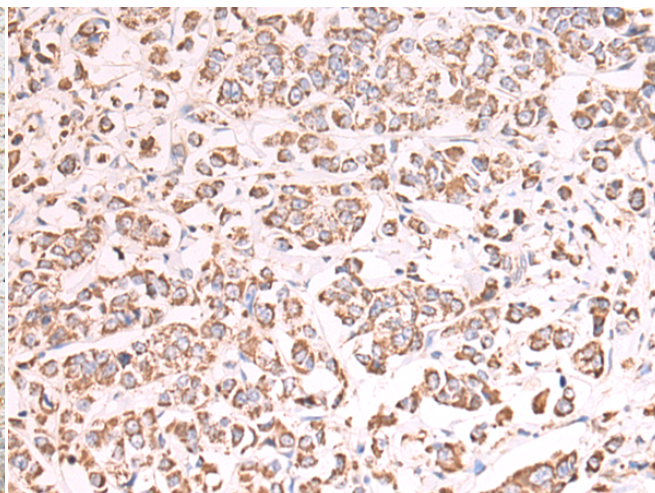
成分: PBS (without Mg²⁺ and Ca²⁺), pH 7.4, 150 mM NaCl, 0.05% Sodium Azide and 40% glycerol

研究领域: Signal Transduction

储存和运输: Store at -20°C. Avoid repeated freezing and thawing



Immunohistochemistry analysis of paraffin-embedded Human liver cancer tissue using 216587(ITGB6 Antibody) at a dilution of 1/55(Cytoplasm).



Immunohistochemistry analysis of paraffin-embedded Human breast cancer tissue using 216587(Anti-ITGB6 Antibody) at a dilution of 1/55.